

# Weesaw Township Parks & Recreation Plan 2021-2026



[This page left intentionally blank.]

# Acknowledgments

The Weesaw Township Parks & Recreation Plan, 2021-2026, presented on the following pages is one step in the development of our township parks that began over ten years ago. Along the way, planning for our parks and the work that followed has benefited greatly from the insights and efforts of several township boards, the ongoing Weesaw Township Parks Committee, and the many contributions and suggestions of township residents, park visitors, and others.

## Weesaw Township Board

Gary Sommers, Supervisor; Wanda Green, Clerk; Michelle Tackitt, Treasurer; Art King, Trustee; Robert Warmbein, Trustee

## Weesaw Township Parks Committee

Gary Sommers, Art King, Mike Metz, Terry Hanover, Tabatha DeRossi, Jack Dodds

## Former Weesaw Township Board Members

Melodie Culverhouse, Dave Heininger, Jack Jones, Sandy McKamey, Irene Oman, Jane Tackitt, Karen Thompson

## Former Parks Committee Members and Volunteers

Cheryl Bates, Ryan DeRossi, Rick Eichholz, Peggy Fanning, Pat Fisher, Rebecca Gloe, Debra Hamilton, Lorraine Hanover, Don Harvey, Bob Kaufman, Eli Kanoski, Kevin Kanoski, Linda Kanoski, Sherry Kanoski, Michelle Kay, Molly Kobelt, Blanche Krieger, Kehlan Martin, Cheryl Noel, Bride O'Shaughnessy, Jackie Pantaleo, Paul Pantaleo, Chuck Perkins, Ryan Postema, Olivia Schultze, Christine Scott, Steve Scott, Carolyn Sommers, Donna Sparks, Dale Taylor, Vickie Vertz, Greg Wischmeyer

## Other Significant Contributors

Marcy Hamilton, Deputy Executive Director/Senior Planner, Southwest Michigan Planning Commission, Benton Harbor, Michigan

Abonmarche, Engineering and Design Services, Benton Harbor, Michigan

[This page left intentionally blank.]

# Table of Contents

Introduction 1

Part 1: Community Description 2

Setting and History 2

Physical Characteristics 3: Topography, Climate, Land Use/Zoning, Water Resources, Transportation

Weesaw Population Profile 9: Population, Age Distribution, Race/Ethnicity, Households, Families and Housing, Educational Attainment, Labor Force Participation and Income, Poverty, Disability Characteristics, New Troy Profile, Community Resources

Part 2: Administrative Structure 18

Township Government and Committees 18

Parks Budget and Funding 19

Volunteers and Partnerships 20

Part 3: Recreation Inventory 22

Inventory Process 23

Mill Road Park 24

Weesaw Township Park 26

Boyle Lake State Wildlife Area 31

Regional Recreational Facilities 32

Part 4: Planning and Public Input Process 35

Professional Input 35

Applying NRPA Park Metrics 35

Public Input 36

Plan Review and Adoption 37

Part 5: Goals and Objectives 39

Part 6: Action Program 42: Schedule of Capital Improvements

Appendix 45: Survey Results, 30-Day Review Documentation, Public Hearing  
Documentation, Resolution of Adoption, Letters of Transmittal, Post-Completion  
Report

# Introduction and Purpose

*Recreation is not a secondary concern for a democracy. It is a primary concern, for the kind of recreation a people make for themselves determines the kind of people they become and the kind of society they build. —Harry Allen Overstreet*

Public parks are a relatively recent development in the more than 180-year history of Weesaw Township. So too has been the growing community interest in parks and the increasing commitment by township government to improving the recreational opportunities they provide.

The focus of the Weesaw Township Parks and Recreation Plan is this commitment by residents and government alike. In particular, the Plan aims:

- \* To describe our community and parks at this time, little more than 20 years after their creation.
- \* To describe their features and current deficiencies.
- \* To record public involvement and input in park development and planning.
- \* To anticipate the changing recreational interests of residents and their uses of our parks.
- \* To describe our goals, priorities, and objectives for future park development to attract residents and visitors alike.
- \* To guide Weesaw Township as it develops its recreational facilities.
- \* To lay the groundwork for and support the applications for the grant funding necessary to fulfill many of our goals described in the following pages.

# Part 1: Community Description

*Recreation means to re-create yourself. — Bryant McGill*

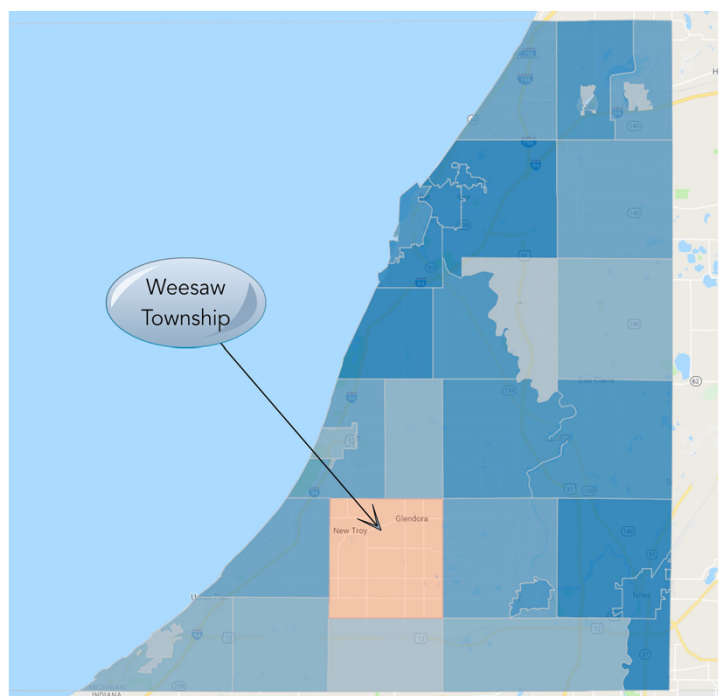
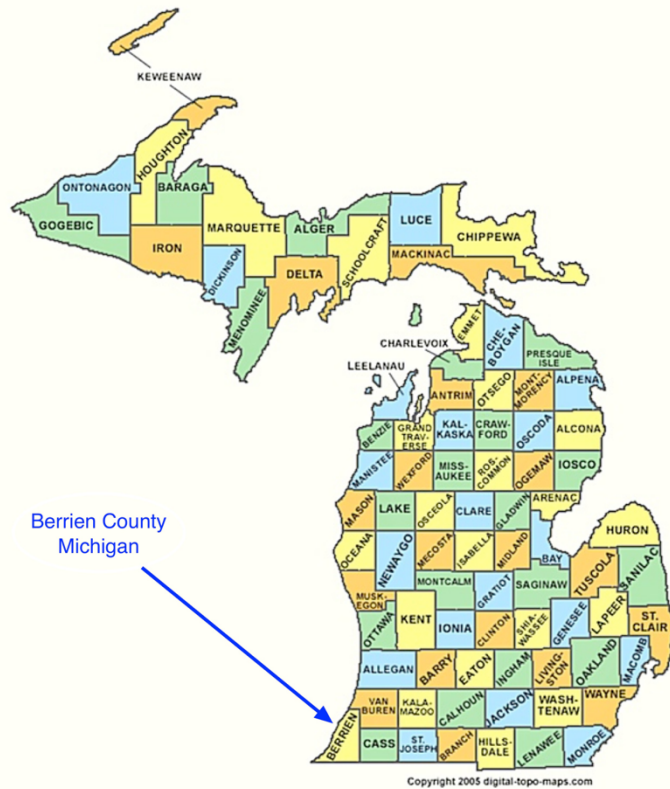
## Setting and History

Weesaw Township is located in southwest lower Michigan, near the southern boundary of Berrien County. At 35.6 square miles, comprised of 36 one-square-mile sections, and square in shape, it neatly fits Thomas Jefferson's vision of township "little republics."

The township contains two unincorporated communities. The larger, New Troy, is located in the northwest section of the township and contains approximately 25% of the township's population. The second, Glendora, located in northeast Weesaw Township, has approximately 150 residents.

Weesaw Township lies between the more heavily populated resort and suburban-style communities along Lake Michigan and the interior communities of southwest lower Michigan. It is surrounded by Chikaming Township in the west, Lake and Baroda townships to the north, Oronoko to the northeast, Buchanan to the east, Bertrand to the southeast, Galien to the south, and Three Oaks to the southwest.

Our township is named for Weesaw, tribal leader of one band of Pottawatomi Indians. He died in September 1836, just months before





Weesaw Township was erected in March 1837.

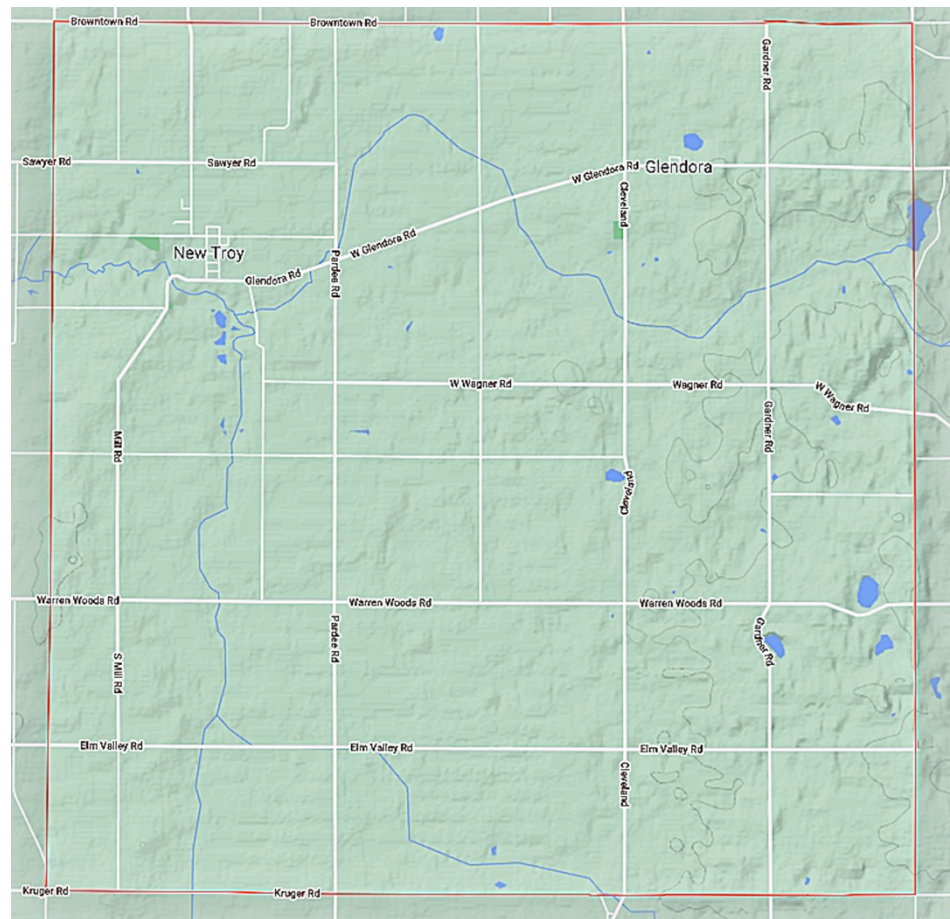
When the first Europeans came to this region in the years when Weesaw was alive, they found a land heavily forested with hardwoods. These first arrivals were not permanent residents but itinerant loggers who cleared the land and lived in camps near their sawmills. At this time, no more than 500 Europeans lived in what would become New Buffalo, Buchanan, and Weesaw townships.

In 1836, with the arrival of Phineas Stratton, the Gould brothers, and others, the land that would become Weesaw Township was settled and farms were carved out of the wilderness. In 1837, at the site of Solomon and Hiram Gould’s “North Mill,” a village was platted called “Troy,” later to be renamed “New Troy.” Within about a dozen years, the European population of the new township had grown to 142.

## The Physical Characteristics

### Topography

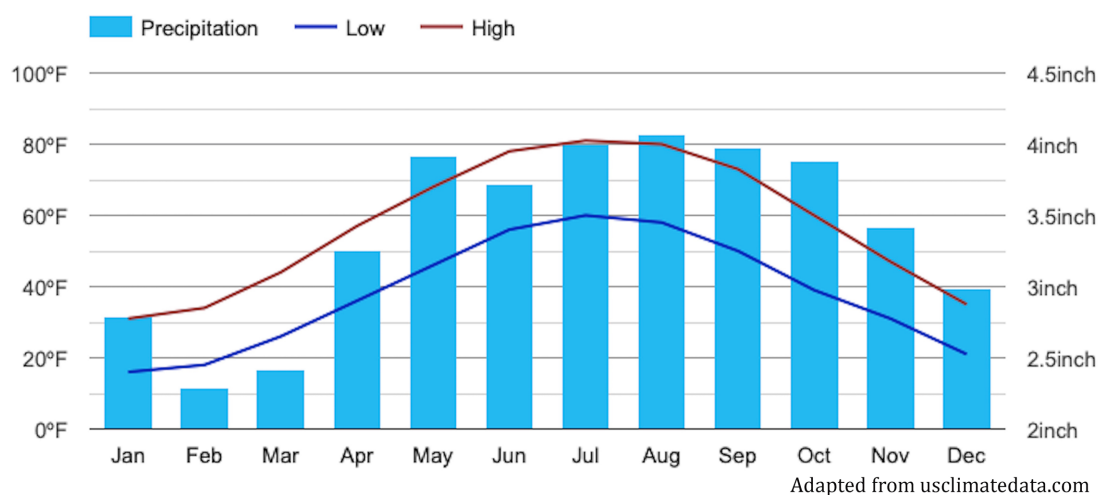
At the western boundary of Weesaw Township, the land rolls gently toward to the dunes on the shore of Lake Michigan. On the east side of the township, hills rise toward the St. Joseph River. The middle of the township, from north to south, is level ground, good for farming. Township elevation varies from 636’ above sea level to 653’.



Adapted from Google Maps

## Climate

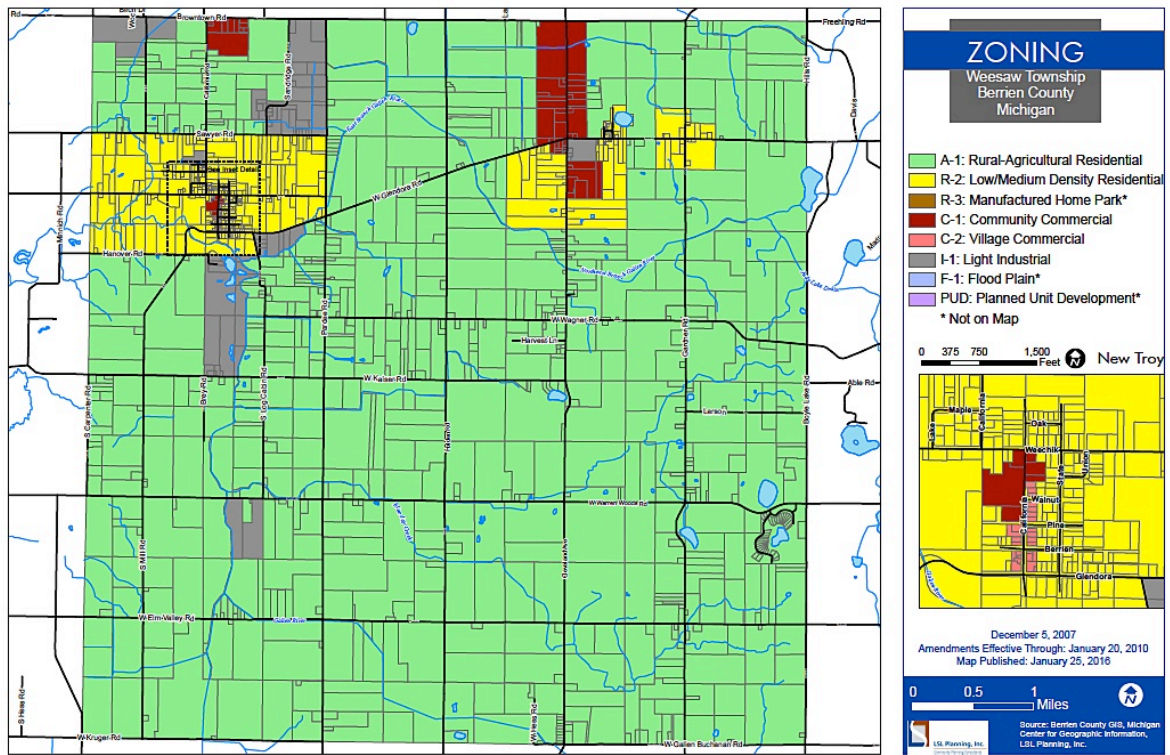
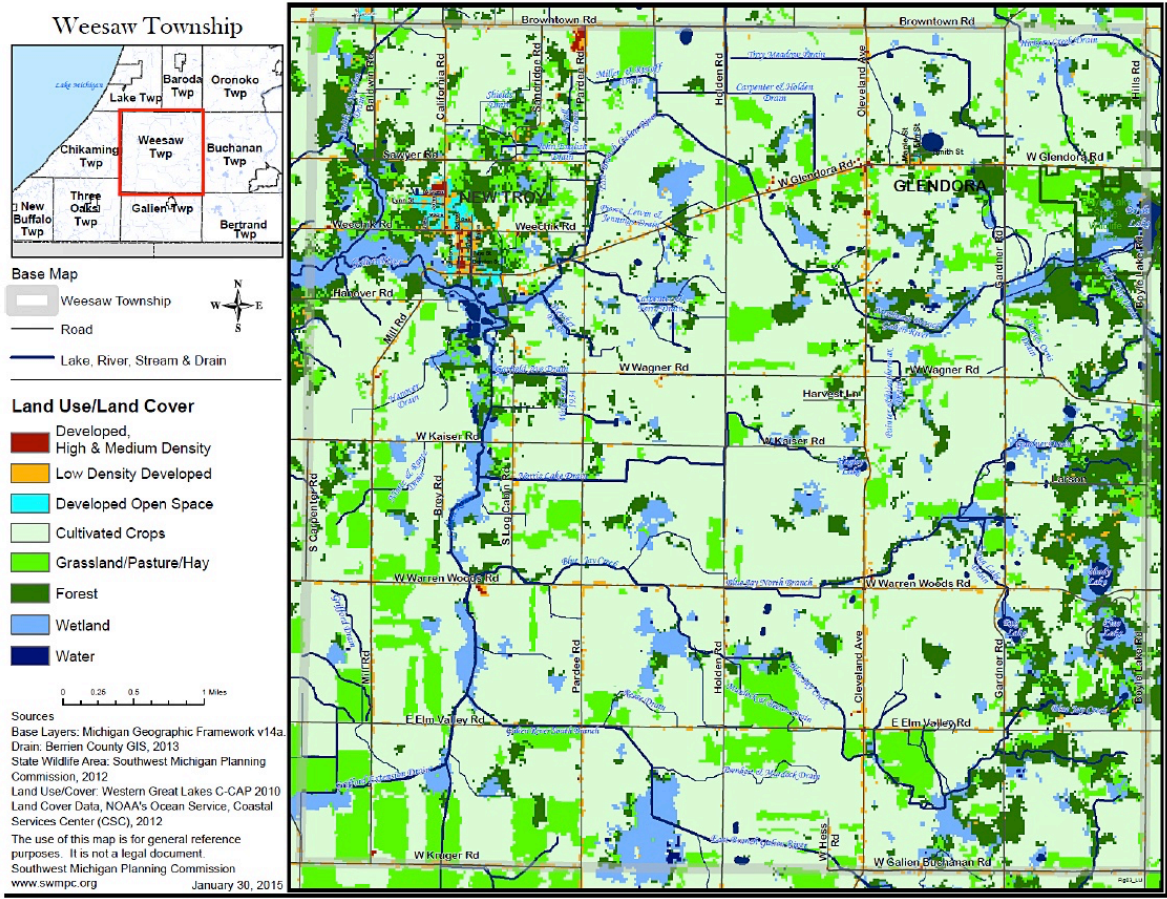
Weesaw Township averages 173 sunny days per year. July high temperature averages 83 degrees; January low averages 18 degrees (see the graph below). The township gets 40 inches of rain per year, two inches above the national average; snowfall averages 71 inches, while the US average is 28 inches. The number of days of measurable precipitation: 77.

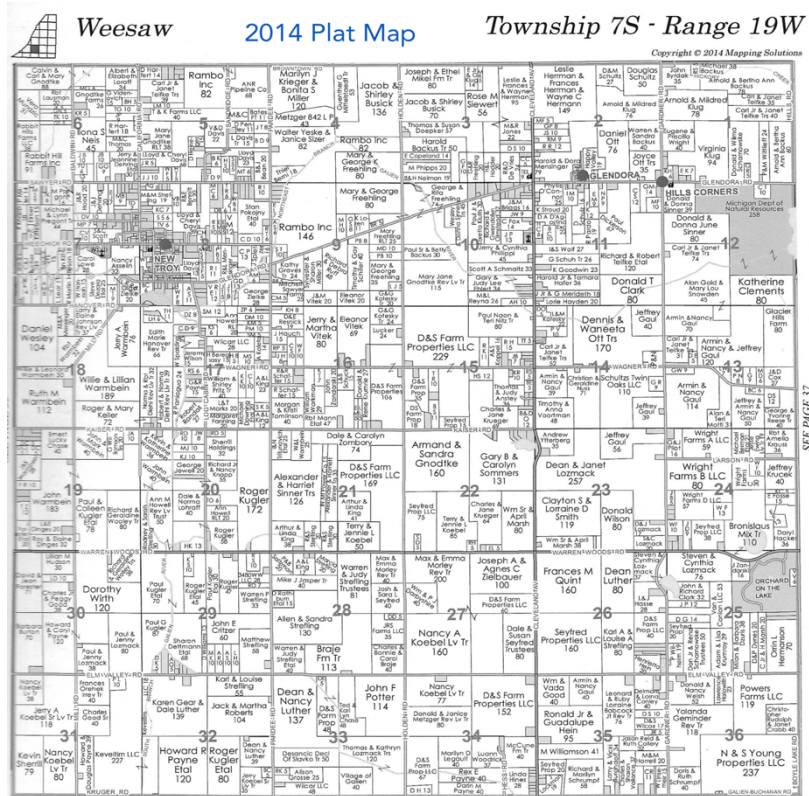


Changing climate, however, will alter the weather of southwest lower Michigan toward “warmer and wetter.” This means warmer winters, earlier spring warming, and rising mean temperatures of from 2 to 16 degrees Fahrenheit. Storms will be heavier, more frequent, and more severe. These changes will be taking place in what is already the wettest area of the state.

## Land Use/Zoning

Weesaw is a rural, agricultural township. As described in the Weesaw Township Master Plan, over 70% of township land is in agricultural use, with corn production at 42%, soybeans at 34%, pasture/hay 14%. The township also produces grapes, nursery products, and some vegetables. Only 2.3% of township land is in low, medium, or high-density development. The following maps illustrate that public lands available for recreational development are nearly non-existent.





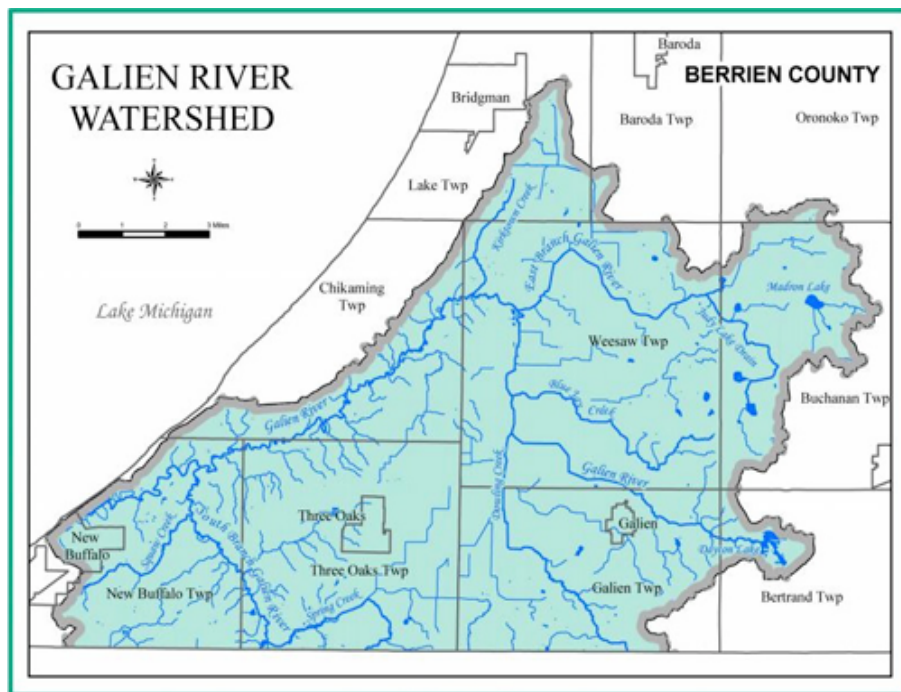
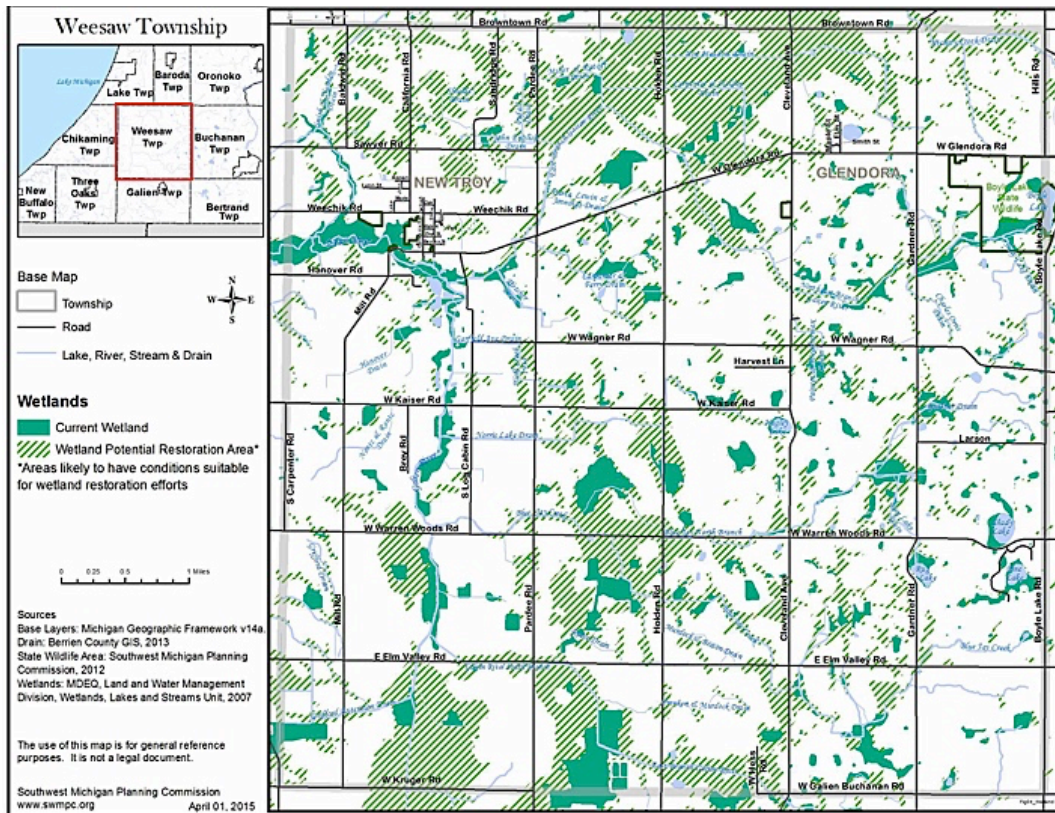
## Water Resources

In the early years of its history, Weesaw Township was not only a landscape heavily forested; it was also a waterscape. The Galien River and Blue Jay Creek remain the most significant waterways. But, as an old history book puts it, much of the township was “low and marshy,” marked with many wetlands. Before the land could be made productive for farming, ditches had to be dug and these wetlands drained.

Today, the more than 80 drains in Weesaw Township symbolize the efforts to manage these wetlands. They and the fact that nearly all of the township falls within the Galien Watershed indicate the extent to which the township remains a watery environment. (See the following maps.) As such, these water resources are valuable



to the township and the region for floodwater storage, sediment retention, nutrient transformation, wildlife habitat, and recreational use.

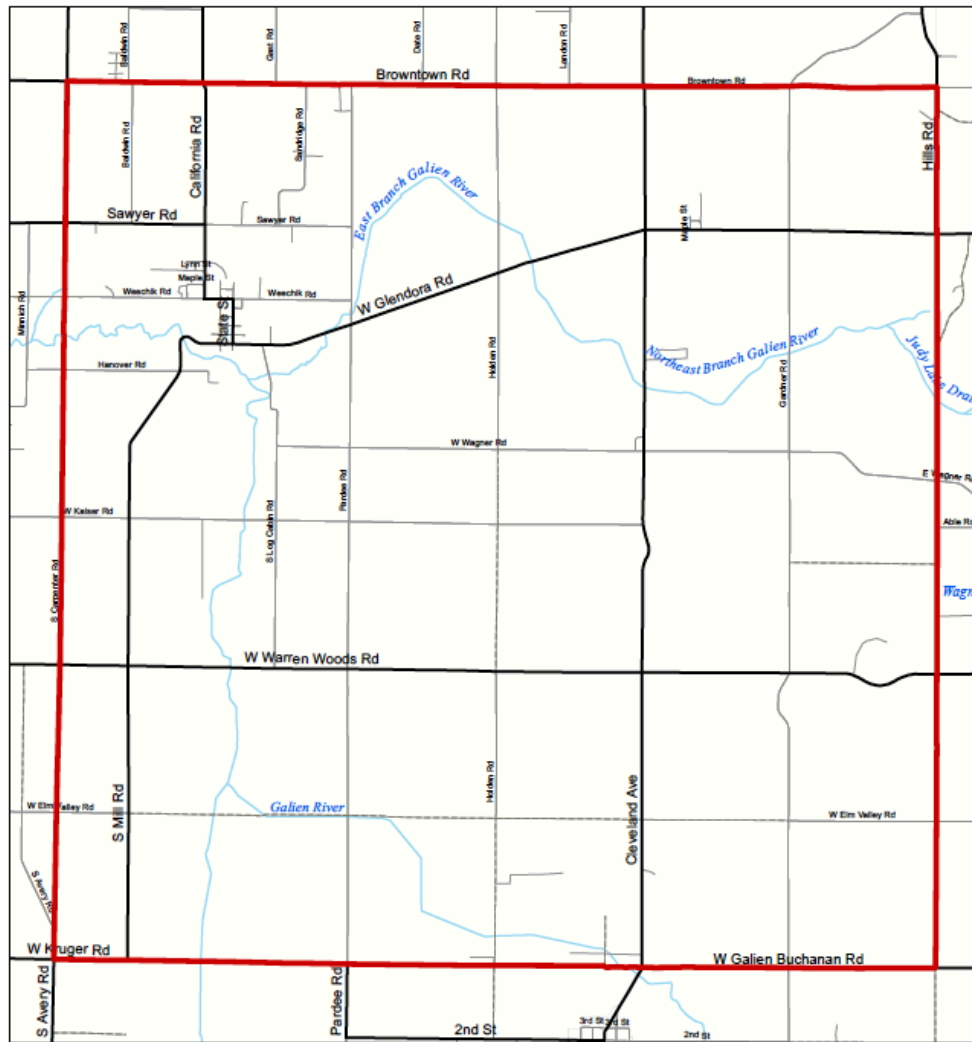


Adapted from Southwest Michigan Planning Commission

## Transportation

Weesaw Township has over 74 miles of roads: 29 miles of primary roads, 43 miles of local. Cleveland Avenue is the primary north/south artery. Browntown, Warren Woods, and Elm Valley roads might be considered “gateway” roads leading motorists and bicyclists from the resort areas along Lake Michigan to inland Berrien County and southwest lower Michigan.

### Weesaw Twp



Map Prepared July 2006 by:  
**Southwest Michigan Planning Commission**  
Tel: 269-925-1137 Fax: 269-925-0288  
Email: [swmicomm@swmicomm.org](mailto:swmicomm@swmicomm.org)  
Website: [www.swmicomm.org](http://www.swmicomm.org)

Base Map Source:  
MI Center for Geographic Information,  
Framework (V5a)  
1 inch equals 0.9 miles



The township’s only public transportation, Berrien Bus, serves rural riders throughout Berrien County on an advance-reservation basis. The majority of resident travel is by private vehicle.

Like other townships in Berrien County and throughout Michigan, Weesaw has struggled to maintain its roads. However, over the last 8 years, Weesaw voters have supported township millages to improve their local roads.

Regional and national transportation—by major highway, Amtrak, interurban rail, bus service, and air—is generally available to Weesaw residents. But they have to get to the transportation hubs or networks to take advantage of them, which all lie outside the township.

Transportation	Location	Distance from Weesaw Township
Amtrak	New Buffalo, MI	15 miles
	St. Joseph, MI	18 miles
	Niles, MI	20 miles
	South Bend, IN	28 miles
South Shore Interurban Railroad	Michigan City	25 miles
South Bend International Airport	South Bend, IN	27 miles
Intercity Bus	Benton Harbor Bus Station, MI	20 miles
Interstate 94	Western Berrien County	6 miles
Red Arrow Highway	Western Berrien County	7 miles
US 12	Southern Berrien County	7 miles
US 31	Eastern Berrien County	15 miles

## Weesaw Population Profile

The populations of the southern townships in Berrien County have fluxuated considerably over the last 70 years. However, the trend in Weesaw and other primarily rural townships has generally shown a shrinking population. This trend has been characteristic in rural communities elsewhere in Berrien County, in Michigan, and across the US. Recently, however, there has been anecdotal evidence of population growth in Weesaw Township stimulated by the Covid pandemic.

Population, Surrounding Townships, 1960-2019					
Community	1960	1980	2000	2019 estimate	% change, 1960-2019
Weesaw	2,229	2,164	2,065	1,854	-375 population, -16%
Baroda	1,877	2,666	2,880	2,757	+880, +32%
Bertrand	1,969	2,369	2,380	2,613	+644, +25%
Buchanan	2,410	3,571	3,510	3,506	+1,096, +31%
Chikaming	1,473	1,833	3,678	3,091	+1618, +52%
Galien	1,685	1,786	1,611	1,454	-231, -16%
Lake	2,016	2,212	3,148	3,004	+988, +33%
New Buffalo	2,068	2,878	2,468	2,318	+250, +11%
Oronoko	6,397	10,761	9,843	8,988	+2591, +28%
Three Oaks	2,856	3,045	2,949	2,427	-429, -15%

### Age Distribution

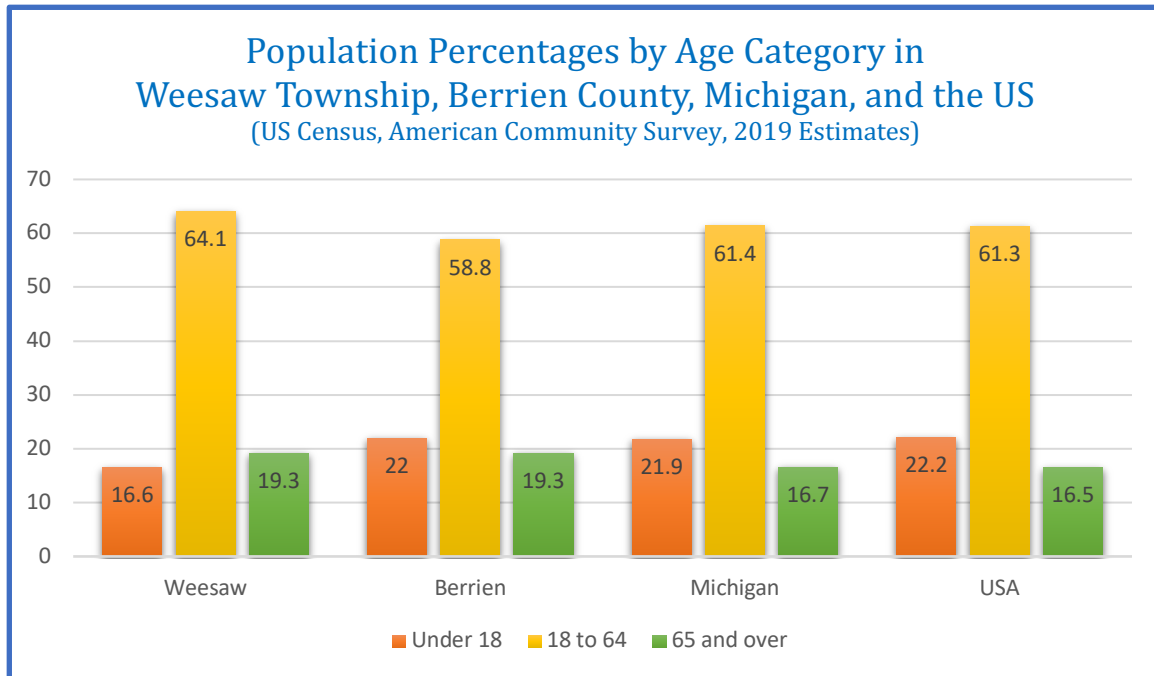
At the 2010 census, the median age for Weesaw residents was 45.7. The 2019 American Community Survey, 5-year estimates, projects a rising median age of 48.7. The following table displays population trends for Weesaw population groups from 2000 through projected 2019 figures.

Age	2000		2010		2019 Projection*	
	Number	Percent	Number	Percent	Number*	Percent*
Total Pop.	2,065	100	1,936	100	1,854	100
0 to 9 yrs	243	11.7	201	10.3	199	10.7
10 to 19 yrs	305	14.8	231	11.9	153	8.3
20 to 64 yrs	1,239	60.0	1,177	60.7	1,144	62.7
65 and up	278	13.4	327	16.9	358	19.3

\* The American Community Survey figures are calculated as estimates and percentages within margins of error.

The trends in the figures above show a decline both in total Weesaw Township population and across nearly all subgroups. Only among older residents is the population growing. The following chart, comparing Weesaw with the rest of Michigan and the nation as a whole, shows that the township's increasing percentage of seniors contrasts with percentages elsewhere. The population of Weesaw Township is aging.





### Race/Ethnicity: Weesaw Residents, 2010 Census

Regarding race/ethnicity, the residents of Weesaw Township are overwhelmingly non-Hispanic white, in contrast to the more diverse populations of Berrien County, Michigan, and the US as a whole.

Race/Ethnicity by Population Percentages in Weesaw, Berrien County, Michigan, and USA (US Census, American Community Survey, 2019 Estimates)					
Race	Weesaw		Berrien County	Michigan	USA
<b>White</b>	90.5%	1,678	74.9%	75%	60%
<b>Black</b>	0.6%	11	14.5%	13.6%	12.4%
<b>Native</b>	0%	0	0.4%	0.5%	0.7%
<b>Asian</b>	0.8%	15	1.9%	3.1%	5.6%
<b>Islander</b>	0%	0	0%	0%	0.2%
<b>Other</b>	0%	0	0.2%	0.1%	0.3%
<b>Two+</b>	1.7%	32	2.7%	2.5%	2.5%
<b>Hispanic</b>	6.4%	118	5.5%	5.1%	18.4%

## Households, Families, and Housing

The majority of Weesaw Township’s 839 households are composed of single individuals or related couples, averaging 2.2 persons per household. Home ownership in Weesaw is higher than in surrounding areas; geographic mobility is lower.

<b>Weesaw Households</b> (US Census, American Community Survey, 2019)		
Household type	Number	Percent
Total households	839	100
Married couples	1,146	61.8
Male householder	76	4.1
Female householder	269	14.5
Non-family households	363	19.6

<b>Ownership of Occupied Housing Units</b> (US Census, American Community Survey, 2019 Estimates)					
	Weesaw		Berrien County	Michigan	USA
<b>Owner occupied</b>	83.1%	697 units	70.7%	71.2%	64.1%
<b>Renter occupied</b>	16.9%	142	29.3%	28.8%	35.9%

<b>Geographic Mobility</b> (US Census, American Community Survey, 2019 Estimates)					
	Weesaw		Berrien County	Michigan	USA
<b>Same house year ago</b>	92.3%	1,711	85.5%	86.2%	86.4%
<b>From same county</b>	4.1%	76	8.7%	8.2%	7.6%
<b>From different county</b>	0.4%	8	2.1%	3.7%	3.2%
<b>From different state</b>	3.2%	59	3.3%	1.4%	2.3%
<b>From abroad</b>	0%	0	0.5%	0.5%	0.6%

## Educational Attainment

The residents of Weesaw Township have a high school graduation rate higher than that of residents in the rest of Berrien County and the state of Michigan. The rate at

which they have earned a bachelor’s degree or higher (13.3%) is lower than the rate of other Berrien and Michigan residents.

<b>Educational Attainment</b> (US Census, American Community Survey, 2019 Estimates)					
	<b>Weesaw</b>		<b>Berrien County</b>	<b>Michigan</b>	<b>USA</b>
<b>No degree</b>	12.3%	228	10.3%	9.2%	11.4%
<b>High school only</b>	41.9%	776	28.1%	29.4%	26.9%
<b>Some College</b>	32.5%	602	33.8%	32.2%	28.6%
<b>Bachelor’s</b>	9.6%	177	16.7%	18.2%	20.3%
<b>Post-grad</b>	3.7%	68	11.1%	11.9%	12.8%

**Labor Force Participation and Income**

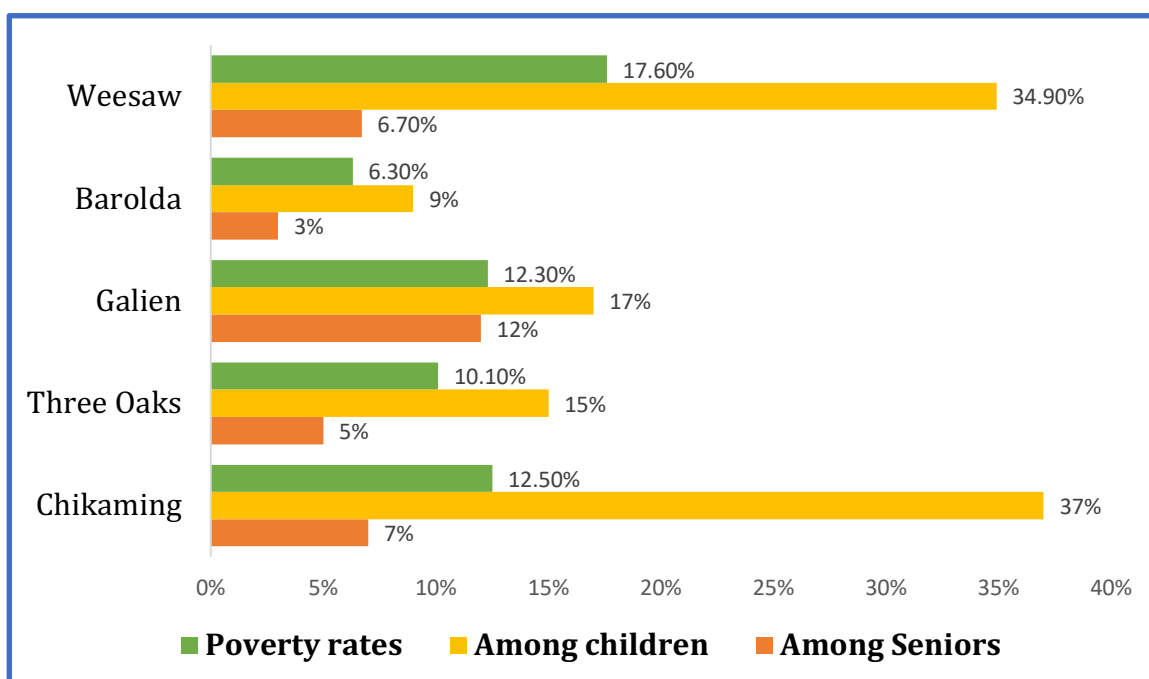
In June 2021, 57.2% of Weesaw Township residents were employed, with an unemployment rate of 5.8%. According to the American Community Survey, in 2019, per capita income stood at \$28,663, about 90% of the amount in Berrien County and the rest of Michigan. Weesaw median household income stood at \$47,788, less than in Berrien County and the rest of Michigan.

<b>Household Income</b> (US Census, American Community Survey, 2019 Estimates)					
<b>Income categories</b>	<b>Weesaw</b>		<b>Berrien County</b>	<b>Michigan</b>	<b>USA</b>
<b>Under \$50k</b>	54.1%	454	49.3%	44%	38.4%
<b>\$50k - \$100k</b>	28.5%	239	28.6%	31%	30.2%
<b>\$100k - \$200k</b>	15%	126	17.7%	19.8%	22.9%
<b>Over \$200k</b>	2.4%	20	4.4%	5.3%	8.%

## Poverty in Weesaw Township

The poverty rate in Weesaw Township is 17.6%, about 10% higher than in the rest of Berrien County and 25% higher than in Michigan as a whole. Compared to the rest of Berrien County, Michigan, and the US, poverty among children is high both in Weesaw and in surrounding townships. Such rates may affect children’s access to recreational opportunities.

<b>Poverty Among Children and Seniors</b> (US Census, American Community Survey, 2019 Estimates)					
	<b>Weesaw</b>		<b>Berrien County</b>	<b>Michigan</b>	<b>USA</b>
<b>Children under 18</b>	34.9%	107	25.3%	19.9%	16.8%
<b>Seniors</b>	6.7%	24	8.7%	8.4%	9.4%

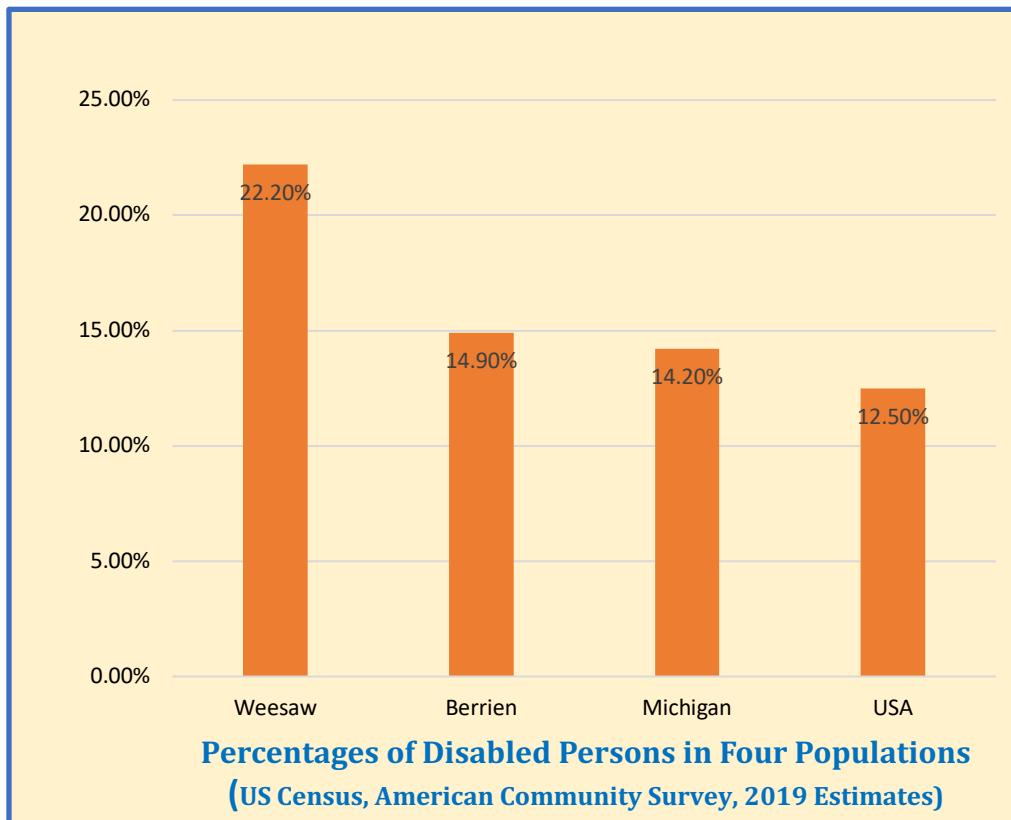


## Disability Characteristics

Parks and recreational facilities should be designed and constructed so that all can enjoy them. In Weesaw Township, as the following table indicates, a significant percentage of the population may be prevented from the full enjoyment of township recreational facilities because of disability.

Population Groups	Population Totals	Number of Disabled	Percentage of Population
Weesaw Township	1,854	411.6*	22.2%
Hearing difficulty		114	6.2%
Vision difficulty		41	2.2%
Ambulatory difficulty		202	10.9%
Cognitive difficulty		100	5.4%
Self-care difficulty		93	5.0%
Independent living difficulty		161	8.7%

\* One disabled person may have more than one disability and be counted more than once.



## New Troy Profile

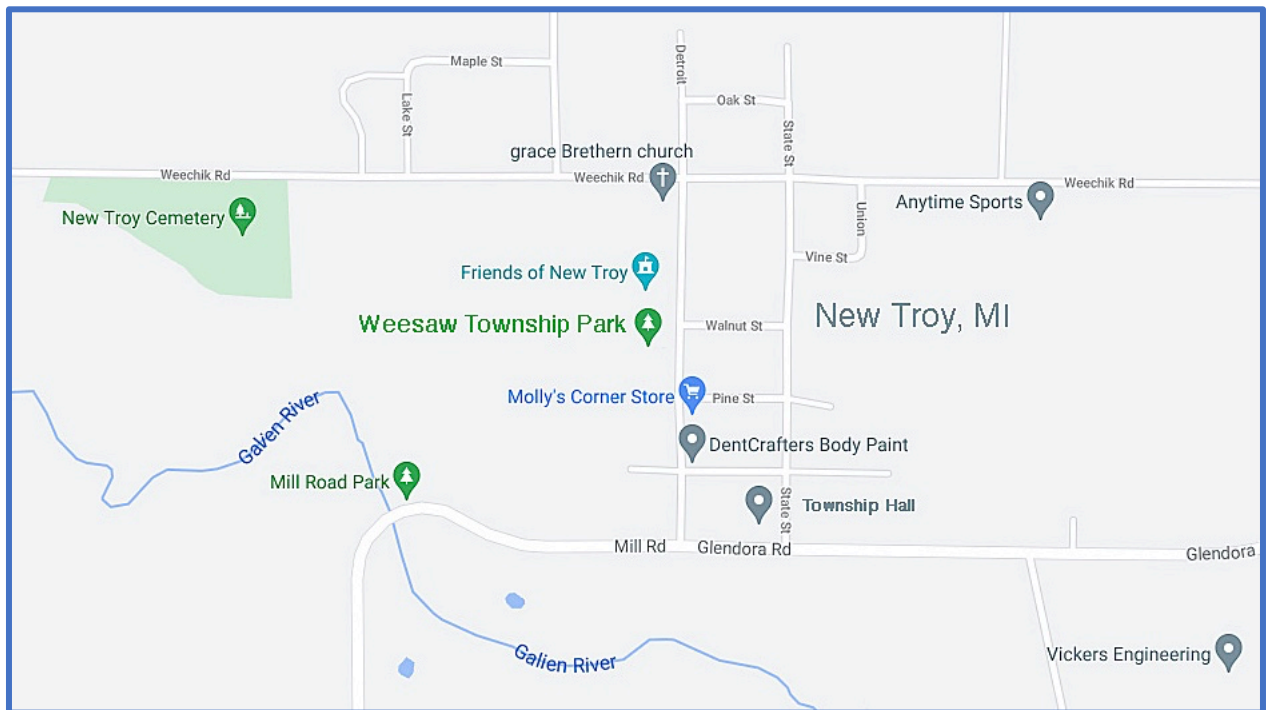
New Troy, Michigan, the larger of Weesaw Township’s two unincorporated communities, is adjacent to both of the township’s current parks. Residents of the community tend to be the most frequent users of these facilities. The median age of a New Troy resident is projected to be 44.4 years, somewhat younger than the median age of Weesaw residents in total, at 48.7 (figures from the US Census, American Community Surveys of 2016 and 2019).

<b>New Troy Population by Age</b>	<b>Age Group</b>	<b>Number</b>	<b>Percentage of Total Population</b>
	All Ages	487	100%
	18 to 64 years	331	68%
	Under 18	112	23%
	65 Years and Over	44	9%
<b>Households</b>	<b>Household Size</b>	<b>Number</b>	<b>Percentage</b>
	All Households	214	100%
	Married couples	105	49%
	Male householder	6	3%
	Female householder	56	26%
	Non family	47	22%
<b>Persons with Disabilities (American Community Survey, 2016)</b>	<b>Type of Disability</b>	<b>Number</b>	<b>Percentage of Total New Troy Population</b>
	All Disabled Persons	103	13.9%
	Sensory Disability	73	9.8%
	Ambulatory Disability	56	7.8%

## Community Resources

Beyond individual Weesaw residents and families are community organizations that in their own ways are members of the community and whose involvement with our parks help to make them a focus of community life. There are the township's several churches, some close by; the American Legion Post #518, just down the road from New Troy; The Friends of New Troy Community Center, adjacent to Weesaw Park; Molly's Corner grocery, across from Weesaw Park, that provides picnic provisions; and the township's several multi-employee businesses nearby whose workers visit the parks over their lunch hours and who have held group events in the park. Weesaw parks benefit from the proximity of our community organizations.

There are no public or private schools in Weesaw Township. And so students lack easy access to recreational facilities. Elementary and high school students may attend the schools in the consolidated River Valley School District: River Valley Middle School and High School (5 miles from New Troy), Three Oaks Elementary School (8 miles from New Troy), Chikaming Elementary (4 miles from New Troy). Our students may also attend schools in New Buffalo, Bridgman, or Buchanan, Michigan, that participate in the "Schools of Choice" program. Students are bused to schools within and outside the school district or travel by private vehicle.



Adapted from Google Maps

# Part 2: Administrative Structure

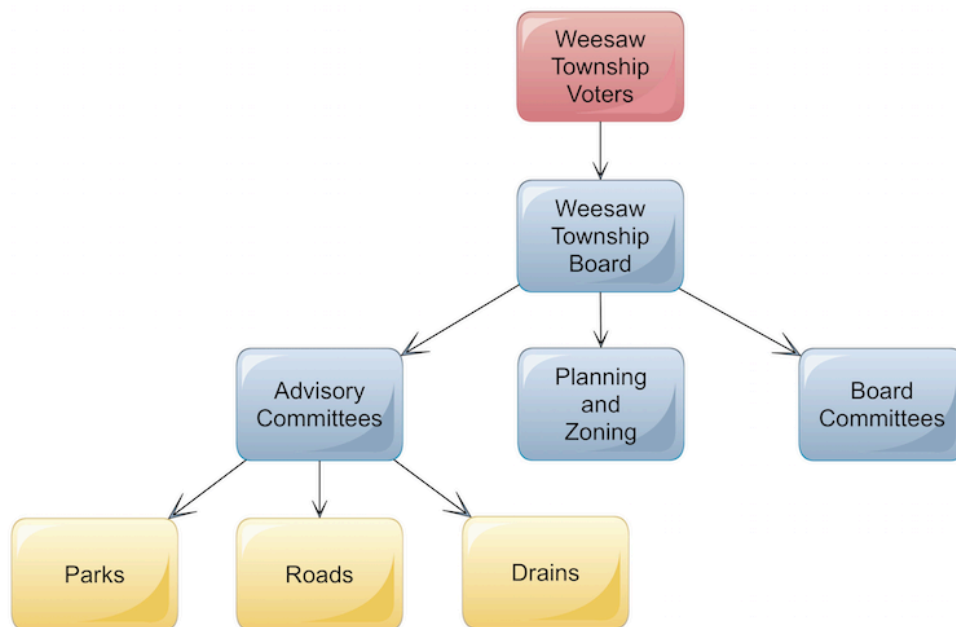
*Plans to protect air and water, wilderness and wildlife are in fact plans to protect man.*  
—Stewart Udall

## Township Government and Committees

Weesaw is a general law township. Voters elect a five-member board of trustees consisting of a supervisor, clerk, treasurer, and two trustees. The current Weesaw Township Board (2021):

Gary Sommers, Supervisor  
Wanda Green, Clerk  
Michelle Tackitt, Treasurer  
Arthur King, Trustee  
Robert Warmbein, Trustee

To serve the needs of residents and the responsibilities of government, the Township Board is assisted by three types of governmental organizations: board committees, consisting solely of township board members and overseeing areas such as the fire department and cemeteries; planning and zoning bodies, consisting of board members and residents who are paid a small stipend for participation; and advisory committees, consisting of board members and community volunteers.



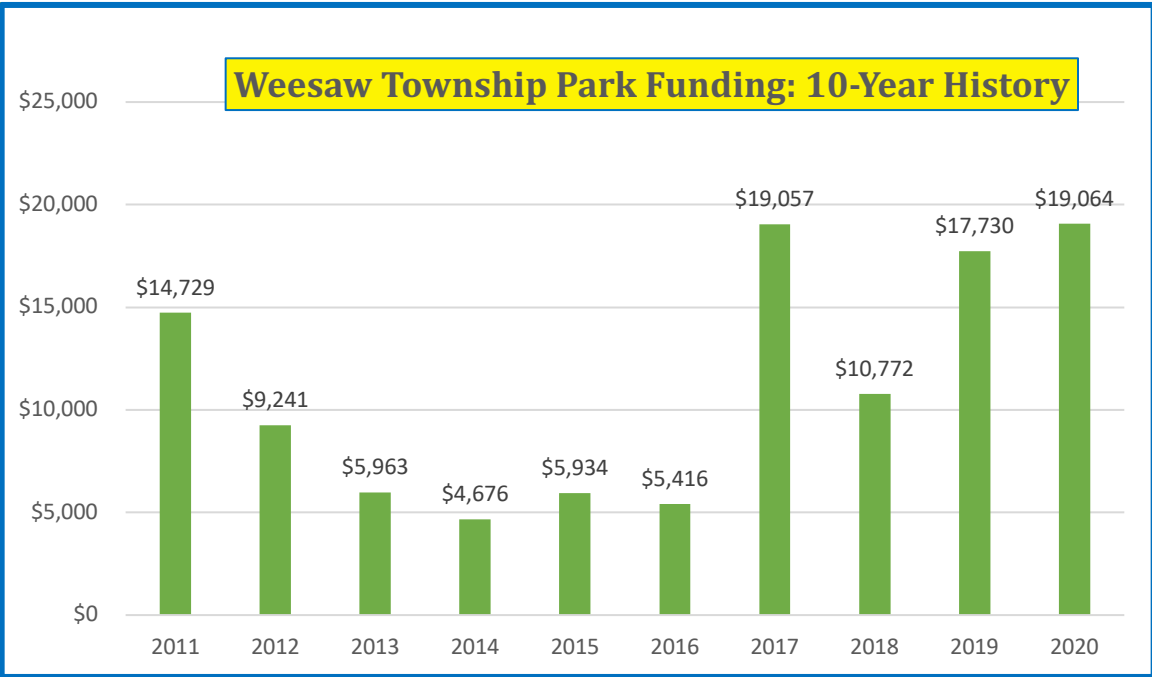


The Weesaw Township Parks Committee was first formed in April 2005 as an advisory committee providing information and recommendations. This administrative structure has been created in accordance with Michigan Act 321 of 2000, Recreational Authorities Act. Meetings of the committee are open to the public on the second Monday of each month, beginning at 7:00 pm. The current Weesaw Township Parks Committee:

- Gary Sommers, Chair and Township Supervisor
- Arthur King, Township Trustee
- Michael Metz, volunteer
- Terry Hanover, volunteer
- Tabatha DeRossi, volunteer
- Jack Dodds, volunteer

## Parks Budget and Funding

Weesaw Township operates on an April 1—March 31 fiscal year. To fund government operation, the Township relies primarily on constitutional revenue sharing and property taxes. All expenditures for park improvements, operations, and maintenance must be approved by the Township Board. Funding currently comes from General Fund dollars. There is no separate parks millage. There is currently no debt incurred by the Township for park facilities or operations, and the Township currently provides no recreational programming nor employs any park personnel. A ten-year history of Weesaw Township parks funding:



# Volunteers and Partnerships

At the present time, park maintenance depends wholly on a single township maintenance worker and volunteer efforts by township board members and residents. Lawn care is contracted.

Improvements to Weesaw Township parks have resulted from efforts by resident volunteers and individual board members—funding provided from Township General Funds. Examples of volunteer contributions:

- Construction of an ADA-compliant nature trail and bridge
- Design and installation of a memorial to Weesaw Township High School, now the site of Weesaw Township Park
- Construction/installation of park benches
- Creation of a rustic trail around Weesaw Township Park
- Installation of picnic tables and grills
- Plantings of ornamental trees and flowers
- Installation of park signage
- Repair of park playground equipment and park facilities
- Graffiti removal and repainting



It is fair to say that without the efforts of Weesaw Township volunteers identified above, our parks would barely exist.

In addition, Weesaw Township has, in recent years, involved itself in two significant partnerships. The first is with The Friends of New Troy, a local non-profit community organization, from which the township purchased what is now Weesaw Township Park. The parking lot between the park and The Friends of New Troy Center is jointly owned, operated, and maintained by both, 2/3s by the township, 1/3 by The Friends. And, as mentioned above, The Friends have contributed many efforts by their members to maintain and improve our Parks.

The second cooperative relationship (currently suspended) was a 6-year recycling program (2013-2019) that funded a collection dumpster sitting in the Weesaw Park parking lot. The program was jointly funded by Weesaw Township, The Friends of New Troy, and Berrien County. It is important to note that this program was initiated and operated by two township resident volunteers.



With the addition of future park improvements described in parts 3, 5, and 6 of this plan, Weesaw Township will expand its cooperative relationship with other community, environmental, educational, and recreational organizations. They will provide our parks with new visitors and additional support. Among such organizations are:

- Berrien Birding Club, Berrien County Parks
- Love Creek Nature Center, Berrien Center, MI
- Sarett Nature, Benton Harbor, MI
- Friends of Berrien County Trails, New Buffalo, MI
- Harbor Country Hikers, New Buffalo, MI
- Chikaming Open Lands, Sawyer, MI
- Michigan Water Trails/Southwest Michigan Water Trails, Traverse City, MI
- Three Oaks Spokes Bicycle Club, Three Oaks, MI
- Weesaw Trailblazers, local park supporters and volunteers
- Red Arrow Renegades Car Club, New Troy, MI

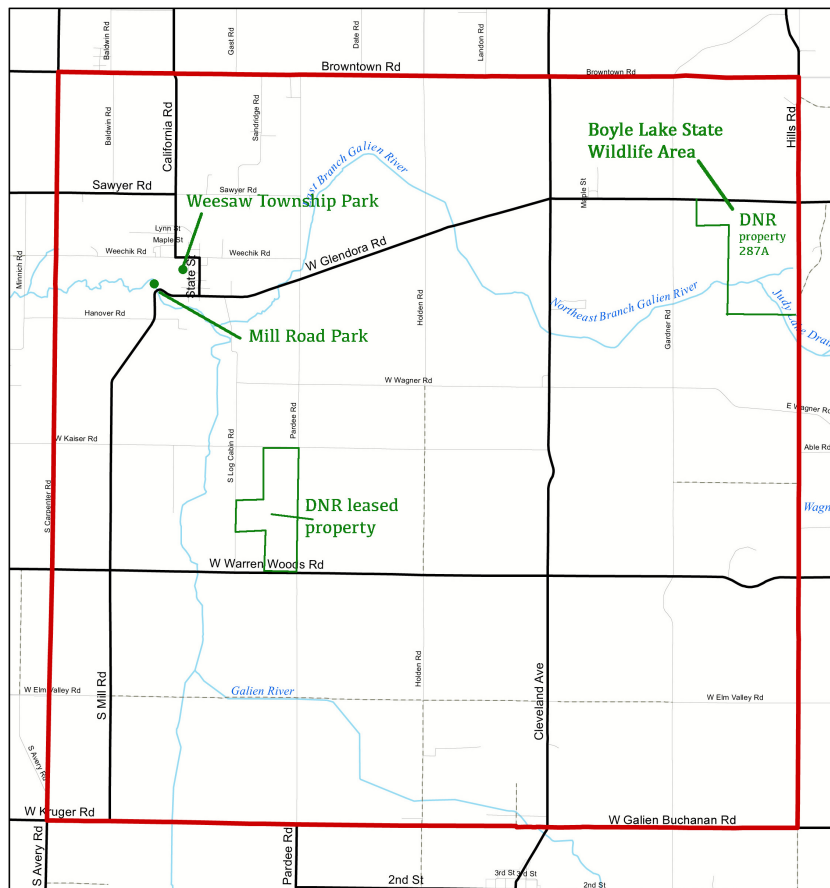


# Part 3: Recreation Inventory

*Everybody needs beauty as well as bread, places to play in and pray in, where nature may heal and give strength to body and soul. —John Muir*

Until recently, Weesaw Township contained little public land—Township Hall, the fire department, and two cemeteries. Except for the playground at New Troy Elementary School, closed in 2005, and the Boyle Lake State Wildlife area in the northeast corner of the township, there were no public recreational facilities.

But over the last twenty-five years, interest in recreation has grown, both among residents and the members of township government. Now, in 2021, Weesaw Township has two public parks that are the focus of this recreation plan. Weesaw Township Park sits at the center of the village of New Troy. Mill Road Park sits astride the Galien River at the southwest edge of the village.



Map Prepared July 2006 by:  
**Southwest Michigan Planning Commission**  
 Tel: 269-925-1137 Fax: 269-925-0288  
 Email: [swmicomm@swmicomm.org](mailto:swmicomm@swmicomm.org)  
 Website: [www.swmicomm.org](http://www.swmicomm.org)

Base Map Source:  
 MI Center for Geographic Information,  
 Framework (V5a)  
 1 inch equals 0.9 miles





## The Inventory Process

To make its inventory of recreational facilities in the township and the south Berrien County region, the Weesaw Parks Committee has done the following:

- Consulted written documents: newspaper accounts, master plans, and, especially, the “ADA 2010 Standards for Accessible Design,” “Outdoor Developed Areas: A Summary of Accessibility Standards for Federal Outdoor Developed Areas” (United States Access Board), “Designing for Inclusive Play: Applying the Principles of Universal Design to the Playground,” (Jennifer K. Skulski), and “MDNR Guidelines for the Development of Community Park, Recreation, Open Space, and Greenway Plans.”
- Interviewed township officials, experts in park facility and trail development, and township residents with knowledge of the history of our new park lands.
- Made direct, detailed observation of the park lands described below.
- Applied the ADA scoring system and access guidelines while making the inventory.

DNR Accessibility Rating System for Parks and Recreation Facilities	
Accessibility Rating	Definition
1	None of the facilities meets accessibility guidelines
2	Some of the facilities meet accessibility guidelines
3	Most facilities meet accessibility guidelines
4	The entire park meets accessibility guidelines
5	The entire park was developed using principles of universal design.

## Mill Road Park



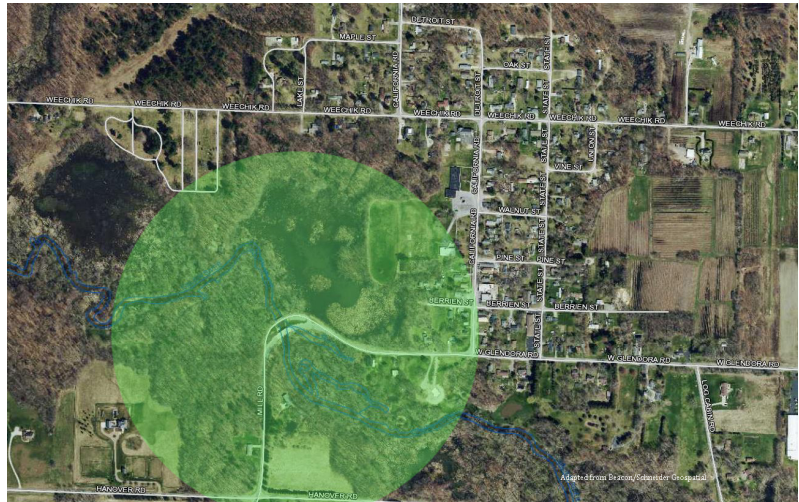
Mill Road Park, at the south edge of the village of New Troy, was created in the late 1990s when the Berrien County Road Commission decommissioned the old Mill Road camelback bridge over the Galien River and built a new bridge beside it. Instead of demolishing the old bridge, however, the commissioners chose to preserve it, the first such act of preservation in the state of Michigan.

On the approaches to the old bridge, the road commission created a small park and gave Weesaw Township permanent easement to the land for recreational purposes. Along with the easement came a Historic Preservation Covenant binding the township to preserve the old bridge as a historic site. It is now on the National Register of Historic Places.

## Mill Road Park Description

Mill Road Park is a township-owned approximately 2-acre mini park (MDNR classification) at the edge of the village of New Troy.

Given its attraction as a Galien River fishing spot (brown trout, northern pike, bass, catfish, or panfish), its service area is not only New Troy but the township and the south Berrien County region beyond. The “walkability” circle to the right



may suggest easy access from the village. However, there are no sidewalks or other pathways to the park. Visitors usually arrive by vehicle.

Park amenities are identified in the image below. Its ADA accessibility rate: 4. All current amenities meet ADA specifications.

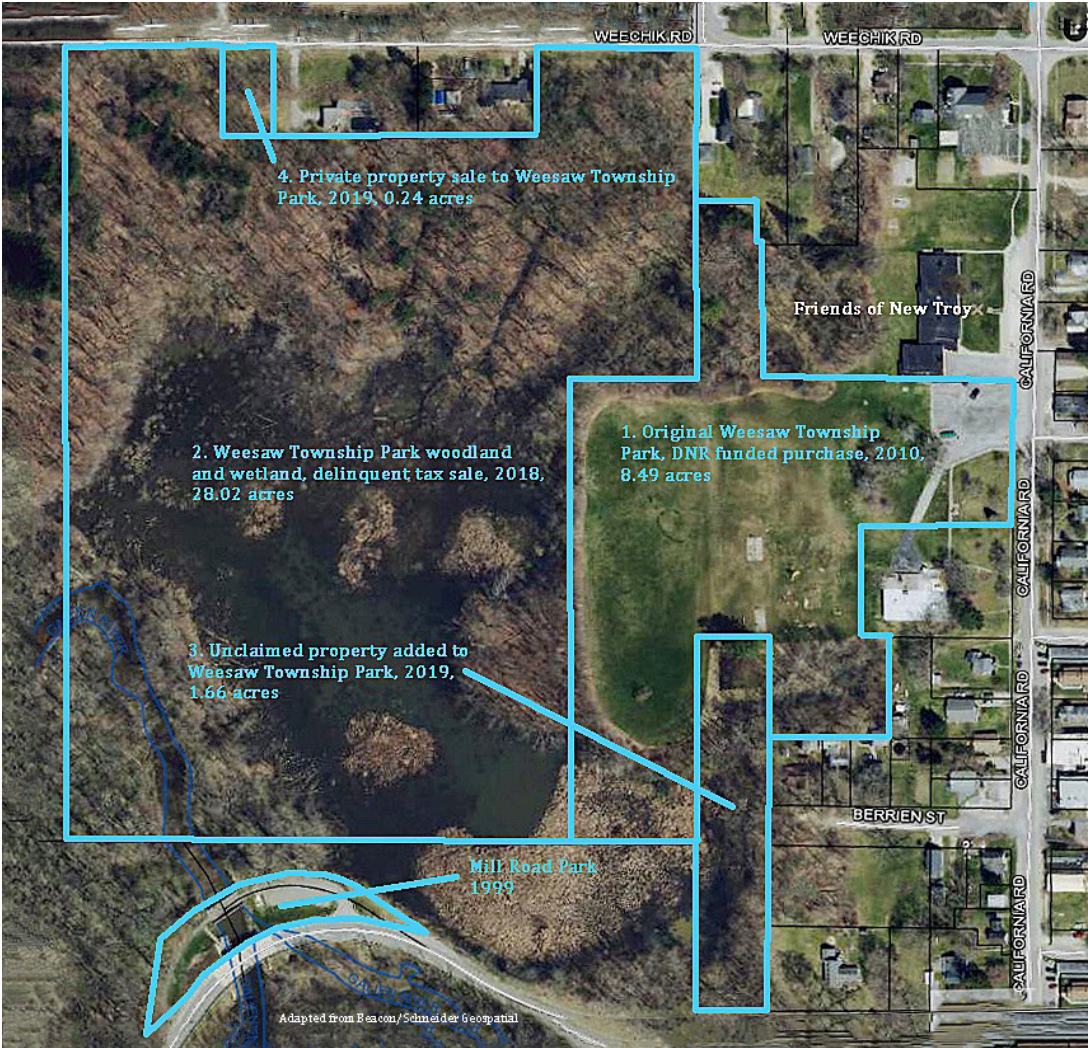


Mill Road Park deficiencies:

- Lack of easy access for foot traffic
- No connection to Weesaw Township Park on the other side of the wetlands
- No view points or benches overlooking the wetlands to the north
- No bathrooms
- No river access or “take out” for kayakers or canoeists

## Weesaw Township Park

The larger of our two parks, Weesaw Township Park was created in four stages over the course of ten years. The first part was created in 2010, when the township purchased the 8-acre site of the old New Troy High School from a local community group, The Friends of New Troy. The purchase was funded primarily through a grant from the Michigan Natural Resources Trust Fund (Grant TF07-082; see grant status report below).





In 2018, the Weesaw Township Board greatly expanded the park through the delinquent tax purchase of a 28-acre parcel of wetlands and forest adjacent to the original park. Five acres of the new land were intended to be added to New Troy Cemetery, the remainder to remain in its natural state to expand recreational possibilities in the park.

In 2019, the final acres of the park were acquired through the addition of unclaimed property and a purchase from a private landowner.



**Weesaw Township Park Description**

Weesaw Township Park is a township-owned 38.41-acre neighborhood park that has the capacity to serve a larger community, both Weesaw and surrounding townships (MDNR classifications). Located in the center of New Troy and limited by its current amenities, however, it primarily serves the young people of the neighborhood.



Park amenities are identified in the images below.



Playground features include a combination climbing structure with slides, additional climbing bars, teeter-totter, tetherball, swings, and two small basketball courts. The ADA accessible Tirrell's Trail includes an ADA accessible bridge.



In recent years, township government and resident volunteers have made park improvements intended to invite a wider range of visitors and prepare for the additional funding required for major park improvements. In addition to the amenities listed above, the township has installed security cameras to improve park safety and extensive drain tiling to prepare park land for new structures. A new driveway from the original parking lot to a new parking lot adjacent to the playground, intended to be installed in 2021, will increase park access. And volunteers have begun to clear the way for a rustic trail through the oak, maple, beech, and poplar woodland surrounding the wetlands that will connect Weesaw Township Park to Mill Road Park.

The ADA accessibility rating for Weesaw Township Park is 2. Some features—Tirrell’s Trail and the picnic area at the front of the park—meet accessibility guidelines.

Weesaw Township Park deficiencies:

- Access to park amenities. As this recreation plan is being written, there are no paths, drives or parking lot to facilitate access to the playground or the nature trail at the center of the park. It is the length of more than two football fields to get from the front of the park to the trail. And because the park slopes from the front to the back of the park, the playground is hidden from potential visitors.
- Aged, deteriorating, and unsafe playground equipment. The equipment was installed from the 1970s to the 1990s and used by the students of the now-closed New Troy Elementary School. It is now, literally, falling apart. The pea gravel surface of the playground does not meet ADA guidelines.
- No bathrooms. Before the Covid-19 pandemic, the township rented a portajohn installed at the front of the park that has since been removed for health reasons.
- No shelter for large gatherings or to protect against inclement weather.
- Lack of appeal to potential park visitors who vary in age, physical ability, and recreational interests. Currently the appeal is primarily to young people who use the playground, but the park offers little to adults, nature enthusiasts, and seniors.



- No facilities for bicyclists. The region is promoted as a bicycle-friendly place for tourists. Cycling road maps lead cyclists to New Troy. The famed Apple Cider Century bicycle ride attracts thousands of riders to its fall event, and the Friends of New Troy Center adjacent to the park was once a rest stop on the ride. Currently, there is not even a bike rack for riders who may wish to pause for a brief rest.
- No wildlife viewing opportunities. Park wetlands contain abundant wildlife, but currently the park offers no structures to facilitate wildlife viewing.
- Pothole-filled parking lot at the front of the park.



Bicycle Route Map, Three Oaks Spokes, Three Oaks, MI



## Status Report for Grant-Assisted Facilities

Weesaw Township Park was purchased by Weesaw Township through the assistance of MDNR grant TF07-082 in 2010. The site is open to the public; the park amenities in place at time of purchase are still in place. See Appendix for the Weesaw Township Park Post-Completion Self-Certification Report.

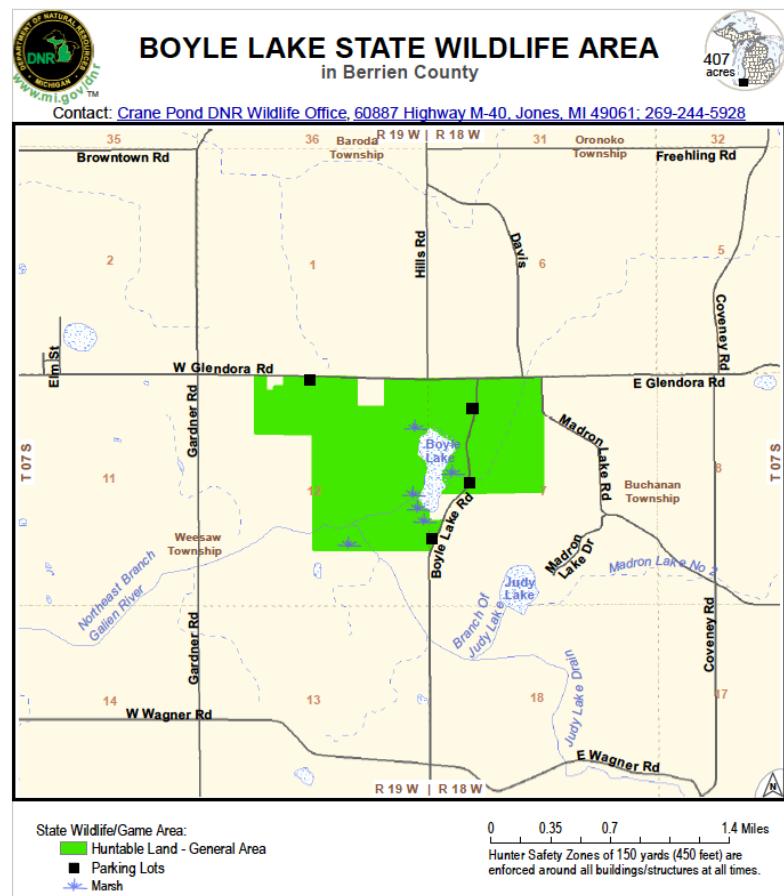


## Boyle Lake State Wildlife Area

The Boyle Lake State Wildlife Area straddles the township boundary between Weesaw and Buchanan townships. It is in the far northeast corner of the township.

Unless otherwise indicated, the following information comes from the MDNR Boyle Lake State Wildlife Area Master Plan, by Kenneth S. Kesson, 2016, and from Strategic Management Plan for Boyle Lake Wildlife Area, MDNR, Crane Pond Field Office.

“The land for Boyle Lake State Wildlife Area was purchased in 1997 from the estate of Anita and Gerald Tichenor using money from the Michigan Natural Resources Trust Fund (MNRTF [Grant TF95-810]). In



1999, an additional 40 acres were purchased from Mr. Merle Phillippi using MNRTF and Pittman Robertson funding “ (Master Plan).

### **Boyle Lake Wildlife Area Description**

“The topography of the area is slightly rolling with about 50 feet of elevation change. . . . Boyle Lake is almost entirely surrounded by [private] ownership except a small parcel on the southeast side of the lake. The headwaters of the east branch of the Galien River run through the entire length of the [wildlife area]” (Strategic Management Plan).

The primary uses of the area are hunting and fishing. “Deer hunters are the number one users of the area, followed by small game hunters pursuing squirrel and eastern cotton tailed rabbit. In recent years, a growing number of duck hunters are also using the area with fair success. There are a considerable number of people who use the County drain to access Boyle Lake for year-round fishing and a few that trap the area for beaver and muskrat” (Master Plan).

Other uses include “hiking, cross country skiing, bird watching, mushroom hunting and berry picking. Also, several people enjoy kayaking and canoeing on the lake throughout the summer months” (Master Plan).

Except for several off-road parking areas, Boyle Lake Wildlife Area offers no amenities. The only access to Boyle Lake itself requires a brief hike through the woods.

The ADA accessibility rating for the Boyle Lake Wildlife Area is 1. None of the facilities meets accessibility guidelines.

### **Status Report for Grant Assisted Facilities**

Boyle Lake Wildlife Area was purchased with the assistance of MDNR grant TF95-810. The site is open to the public; it is largely unchanged since the time of its creation. Weesaw Township is not involved in the maintenance, planning for, or preservation of this site.

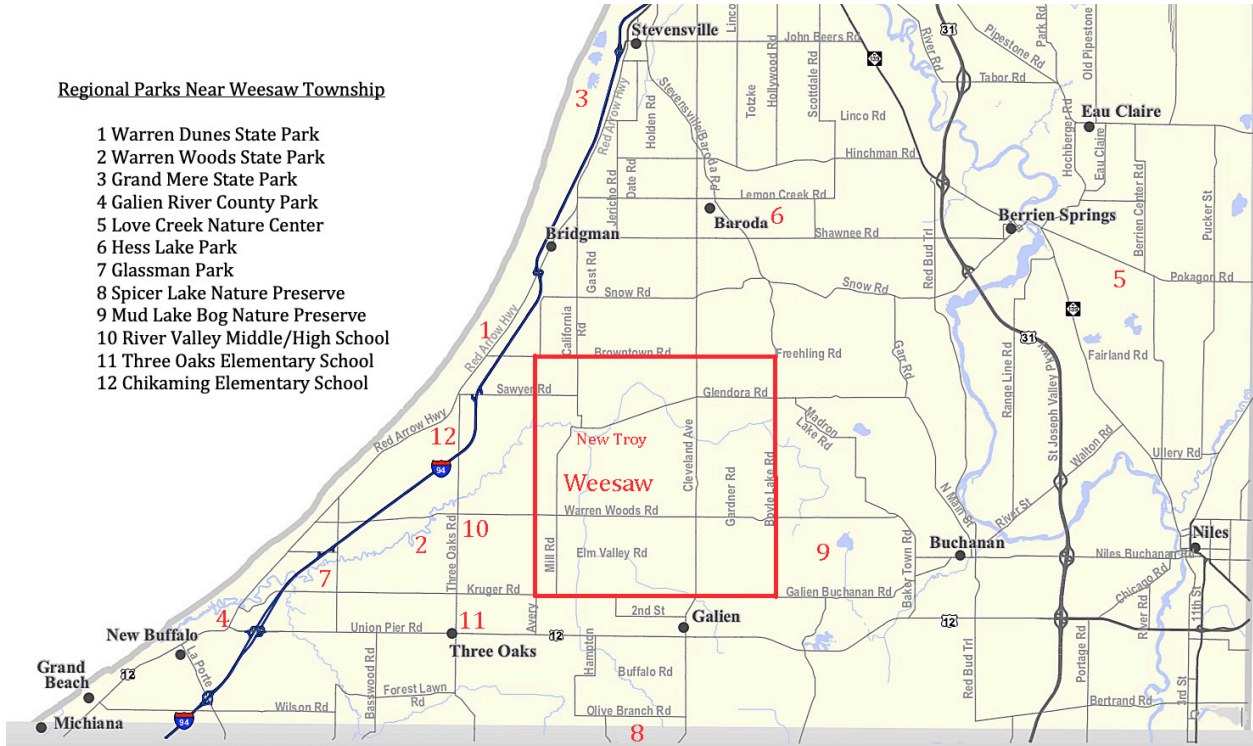
## **Regional Recreational Facilities**

With its proximity to the shoreline of Lake Michigan, Weesaw Township is generally close to recreational opportunities of many kinds. However, access inevitably requires a vehicle.

<b>Name</b>	<b>Location</b>	<b>Distance from Weesaw</b>	<b>Size</b>	<b>Amenities</b>
Warren Dunes State Park	Sawyer, MI	6 miles	1,952 acres	Swimming, boating, hiking, camping, picnicking, hang gliding, birding, x-country skiing
Warren Woods State Park	Sawyer, MI	7 miles	311 acres	Hiking, fishing, snowshoeing, picnicking
Grand Mere State Park	Stevensville, MI	9 miles	985 acres	Hiking, nature interpretation, birding, hunting, fishing, picnicking, snowshoeing
Galien River County Park	New Buffalo, MI	12 miles	86 acres	Elevated walkways, nature viewing, fishing
Love Creek Nature Center	Berrien Center, MI	18 miles	100 acres	Hiking, skiing, nature interpretation, wildlife observation
Hess Lake Park	Baroda, MI	9 miles	29 acres	Fishing, walking/biking trail, toddler playground, nature trail
Glassman Park	New Buffalo, MI	11 miles	47 acres	Kayak launch, walking trail, zen labyrinth, river lookout points
Spicer Lake Nature Preserve	New Carlisle, IN	10 miles	320 acres	Hiking trails, wildlife viewing, boardwalk, birding, nature center
Mud Lake Bog Nature Preserve	Buchanan Township, MI	9 miles	108 acres	Hiking, boardwalk, observation tower, picnicking
River Valley Middle/High School	Three Oaks, MI	5 miles		Athletic fields
Chikaming Elementary School	Sawyer, MI	4 miles		Playground
Three Oaks Elementary School	Three Oaks, MI	8 miles		Playground

**Regional Parks Near Weesaw Township**

- 1 Warren Dunes State Park
- 2 Warren Woods State Park
- 3 Grand Mere State Park
- 4 Galien River County Park
- 5 Love Creek Nature Center
- 6 Hess Lake Park
- 7 Glassman Park
- 8 Spicer Lake Nature Preserve
- 9 Mud Lake Bog Nature Preserve
- 10 River Valley Middle/High School
- 11 Three Oaks Elementary School
- 12 Chikaming Elementary School



Adapted from Southwest Michigan Planning Commission



# Part 4: Planning and Input Process

*Parks are works of art just as a painting or sculpture is.—Thomas Hoving*

The parks and recreation plan in these pages has been the responsibility of the Weesaw Township Parks Committee, an advisory committee to the Weesaw Township Board. All final park development and funding decisions, however, are made by the Board.

Our plan represents a ten-year evolution from the 2010 purchase of the original Weesaw Park acreage until the present. It has been a slow but steady process of responding to shifting township priorities and obstacles to funding. Over the years, the changing membership of the committee has added perspective and kept the committee energized as it formed and pursued its goals.

## Professional Input

Throughout this process, our committee has relied on expert advice from the Southwest Michigan Planning Commission (SWMPC). Their planners have assisted us with park design and funding options, including grant applications.

In 2013, the township met with students from Western Michigan University's College of Civil and Construction Engineering, who presented the design for a nature trail linking Mill Road and Weesaw Township parks.

In 2017, our committee met with an advocate from Disability Network Southwest Michigan to provide guidelines as we laid out an ADA-compliant nature trail and other ADA pathways.

In 2020, a forester met with township residents, Parks Committee members, and township board members to provide information about the forest in Weesaw Township Park.

## Applying NRPA Park Metrics

To help us evaluate current park facilities and point toward potential improvements, we have turned to metrics from the National Recreation and Park Association (NRPA) summarized in the 2021 NRPA Agency Performance Review.

- With two parks and over 40 acres of land for under 2,000 residents, we have ample room to develop facilities to meet community needs and interests.
- Having less than two miles of trails, we are below the number of trail miles for typical communities of our size.

- We have a playground and two small basketball courts—the most common park amenities—but none of the many other amenities found in typical parts.
- Our parks lack indoor recreational facilities or shelter from inclement weather.
- Weesaw parks lack targeted programs for youth and seniors.
- Our policies bar the use of alcohol but not tobacco products.
- At the present time, our annual park funding averages \$11,258.20 or \$6.07 per resident, far below average operational and capital expenditures for other small communities. However, almost all of Weesaw’s parks funding comes from the township’s General Fund and is constrained by the tax and state revenue-sharing dollars received.
- Weesaw Township has no full- or part-time parks employees.

## Public Input

During the ten years of Weesaw Parks Plan evolution, Weesaw Township distributed four different surveys to gather community input. (Complete copies of all surveys, with results, appear in the Appendix.) The first survey, taken in 2010, involved 825 surveys mailed, 810 delivered, 104 returned, a 12.8% return rate. Seventy percent of the respondents were over 50 years of age. Their choices for park improvements, in order of preference:

- A pavilion
- Trails
- Wildlife viewing opportunities
- Playground facilities
- Picnic facilities

The second survey, in 2014, was distributed more widely, to residents with their summer tax bills, at the Post Office, and on the township website. Of those distributed, 108 were returned. In age, 75 respondents were over fifty years of age, 3 were under 20, 10 between 21 and 35. Forty-seven indicated that they never visited township parks. Their choices for park improvements, in order of preference:

- Picnic tables, grills, waste baskets
- Restrooms
- Walking path
- Tied: Benches and nature trail
- Nature viewing platforms

The third survey, completed in 2018, was mailed with the winter tax bill. Concerned that respondents were primarily older residents—township taxpayers more than their children—the Committee included a note encouraging respondents to share the survey with younger household residents. Of the 900 surveys mailed, 86 were returned, a 9.5% return. The reported average age of respondents was 65. Thirty-eight said they never

visited the parks. Their choices for park improvements, in order of preference, show continuity with earlier surveys:

- Walking path, restrooms (Tied)
- Nature trail
- Picnic tables, grills, waste baskets
- Playground equipment
- Nature viewing platforms

The fourth survey, distributed on July 11 and 23, 2021, at two Friends of New Troy fund raisers, was brief. We aimed to learn whether the interests in park amenities had remained constant over the 10-year evolution of Weesaw park planning and whether a broader audience of potential visitors existed for our parks. Their choices, in order of preference:

- Nature trails
- Bathrooms
- Walking path
- Playground
- Tied: Pavilion and Benches

What are Weesaw residents telling us by their responses? Our mostly older respondents want ways to observe and enjoy a natural setting—which our parks provide in abundance—but they also want improved access. They want opportunities for moderate exercise, although they also recognize that the township should respond to the deteriorated condition of amenities for younger park goers. Younger visitors themselves want more varied choices for active play. Perhaps most important, given the number of responses in the 2014 and 2018 surveys, many currently appear to lack a reason to visit our parks. The 2021 survey, however, suggests continuing interest in parks that offer natural beauty. Of the alternative parks respondents said they visited, 10 of 15 are nature parks. And the number of respondents who live outside Weesaw Township suggest a potential wider audience for our parks.

## Plan Review and Adoption

Throughout the preparation of this parks plan, the Weesaw Township Committee has followed instructions laid out in the DNR “Guidelines for the Development of Community Parks and Recreation Plans.” We have drawn upon ten years of township residents’ comments and suggestions for park improvements. And we have relied upon federal, state, and non-profit guidelines to help us plan for improvements in Weesaw Township Park that are inclusive in all senses of the word. We hope to increase park usage by visitors of varying abilities, ages, and interests.

The schedule of the development, further input, refinement, and approval of the Weesaw Township Parks and Recreation Plan, 2021-2026 (see the Appendix for complete documentation):

April 27, 2021	During a review of Weesaw park maintenance and improvements for 2021, the Township Parks Committee decides to complete the parks plan begun in 2018. To move forward with more ambitious improvements than in previous years, the Committee decides that grant funding will be necessary. The Committee decides to invite Marcy Hamilton, Senior Planner, Southwest Michigan Planning Commission, to our next meeting to provide guidance.
May 18, 2021	The Committee receives information from Marcy Hamilton regarding grant options, the grant request process, and appropriate contents for grant requests. The Committee discusses a funding level that will enable the township to fulfill the park plan now unfolding. Chairman Sommers indicates that he will go to the Township Board to request approval for matching funds for a grant request. Marcy Hamilton offers the assistance of Abonmarche engineers in preparing a site plan and cost analysis, and she volunteers to assist in the actual writing of the grant.
July, August 2021	The Committee continues with park improvements funded by the Weesaw Township General Fund and works to complete a draft of the parks plan. A complete draft of the plan is presented to the Township Board to approve its presentation for a 30-day public review.
August 19, 2021	The draft parks plan is posted for 30-day public review on the township web site, at Weesaw Township Hall, and at The Friends of New Troy Community Center. Notice of availability appears in the Berrien County Record newspaper.
September 17, 2021	The Committee receives a proposed Weesaw Township Park site plan and cost analysis from Abonmarche engineers.
October 7, 2021	Notice of a public hearing by the Weesaw Township is posted in the Berrien County Record newspaper.
October 20, 2021	The Weesaw Township Board holds a public hearing to receive public input on the parks plan. Following the hearing, the Board meets in open session and, in a unanimous vote by Board members present, formally adopts the plan and approves it for submission to the Michigan Department of Natural Resources.

# Part 5: Goals and Objectives

*The nation behaves well if it treats its natural resources as assets which it must turn over to the next generation increased, and not impaired, in value.—Theodore Roosevelt*

The goals and objectives for Weesaw Township parks have been shaped by our township profile, the results of resident surveys, and the use of park metrics to evaluate our parks as they are now. Issues of concern:

- Weesaw Township’s relative geographic and social isolation from surrounding recreational opportunities.
- Population characteristics that inhibit travel to recreational sites: low mobility of township residents, relatively high poverty rates, especially among children, and the number of disabled persons.
- Lack of public transportation to recreational sites.
- The lack of recreational opportunities for seniors.
- The number of residents surveyed who say they never visit Weesaw Parks.
- The number of residents who indicate that our parks lack amenities that they desire.
- The number of residents who want expanded opportunities to enjoy the natural world.
- The current condition of amenities in Mill Road and Weesaw parks.

**Goal 1—To preserve and enhance** To preserve Weesaw parks as places of natural beauty while increasing the kinds of recreation available in the parks.

## Objectives

- Budget adequately for park improvements with a multi-pronged approach to funding: the township General Fund, grants, and donor contributions.
- Develop an active volunteer base for maintenance projects and cleanup days.
- Expand and renew amenities in Weesaw Park.
- Keep the Weesaw Parks and Recreation 5-year plan up to date through greater community involvement in preparing and implementing the plan.
- Complete high-priority improvements in Mill Road and Weesaw Township parks.
- Follow regular evaluation and maintenance schedules in both parks, using township employees when necessary.

**Goal 2—To increase visits** To increase the number and variety of visitors to Weesaw parks.

## Objectives

- Prepare a parks page for the township website to promote our parks.
- Install signs on township roads to guide visitors to our parks.

- Use message boards within the parks to promote park amenities.
- Encourage local schools, businesses, and non-profit organizations to utilize our parks for special events.
- Link to enthusiast websites—environmental organizations, hiking clubs, bicycling clubs, and other special interest organizations—to promote the use of our parks for their events.

**Goal 3—To improve access** To improve visitors’ ability to visit and use our parks for their enjoyment.

**Objectives**

- Enable visitors to drive, bike, or walk to the lower level of Weesaw Township Park and its recreational amenities.
- Follow ADA guidelines and principles of universal design in the construction of park amenities.
- Increase access points to Weesaw and Mill Road parks with trails and boardwalks.
- Enable kayakers and canoeists to use Mill Road Park.
- Coordinate with organizations, property owners, and other communities along the Galien River to improve and promote the Galien River Water Trail.
- Work to ensure that water quality is maintained to support use of the Galien River.

**Goal 4: To expand inclusiveness** To expand the range of visitor ages, levels of ability, and interests.

**Objectives**

- Expand the variety of both active and passive recreational amenities in Weesaw parks.
- Increase the number of park viewpoints for nature watching.
- Offer park programs and events for groups of seniors and children.
- Work with MDNR to expand access to and use of Boyle Lake Wildlife Area.

**Goal 5—To connect with others** To connect Weesaw Township with other communities, expanding recreational opportunities for our residents; to leverage limited township funding to expand our recreational opportunities.

**Objectives**

- Partner with educational and non-profit organizations to share recreational opportunities.
- Link to educational, environmental, and recreational organizations on our website to promote greater use by township residents.
- Partner with MDNR to establish and maintain communication.

- Invite informed speakers on environmental and recreational topics to speak to township residents.
- Partner with local schools to offer environmental programs to their students at our parks.
- Actively support county recreational programs and activities.
- Explore with the owners of Morley's Mill permanent easement for a pathway/boardwalk linking Mill Road and Weesaw parks.

## Part 6: Action Program

*Recreation's purpose is not to kill time, but to make life, not to keep a person occupied, but to keep them refreshed; not to offer an escape from life, but to provide a discovery of life.*

—unattributed

The schedule of capital improvements below identifies actions by Weesaw Township to reach its park objectives and goals. Some activities identified in the objectives of Part 5, such as creating a Weesaw Parks webpage and establishing relationships with other recreational organizations, do not require grant funding and are not listed here.

Year	Site	Improvement	Funding Source	Cost
2021				
	Mill Road Park	Perform routine maintenance	General Fund, volunteers	TBD
		Repair or replace security cameras	General Fund, volunteers	TBD
	Weesaw Park	Install drive and parking lot in lower level of park	General Fund, volunteers	TBD
		Begin constructing rustic trail	General Fund, volunteers	TBD
	Both parks	Post park rules	General Fund, volunteers	
2022				
	Mill Road Park	Perform routine maintenance	General Fund, volunteers	TBD
	Weesaw Park	Restore former running track as walking path	General Fund, volunteers	TBD
		Extend rustic trail	General Fund, volunteers	
		Install rented portajohn	General Fund	TBD
2023				
	Mill Road Park	Perform routine maintenance	General Fund, volunteers	TBD
		Install benches in marsh viewing area	Donations, volunteers, General Fund	TBD
	Weesaw Park	Perform routine maintenance	General Fund, volunteers	TBD
		Restore and install playground equipment	DNR grant, volunteers, General Fund	TBD



		Install multi-sport court	DNR grant	TBD
		Begin exercise course	Donations, volunteers, General Fund	TBD
		Install ADA surfaces on ¼ mile Tirrell's Trail and park paths	DNR grant, volunteers, General Fund	TBD
		Install benches along exercise course and walking track	DNR grant, volunteers, General Fund	TBD
		Construct viewing platform on Tirrell's Trail marsh viewpoint	DNR grant, volunteers, General Fund	TBD
		Partner with Friends of New Troy: repave upper parking lot	Grant funding, donations, volunteers, General Fund	TBD
		Install rented portajohn	General Fund	TBD
2024				
	Mill Road Park	Perform routine maintenance	General Fund, volunteers	TBD
	Weesaw Park	Install rented portajohn	General Fund	TBD
		Perform routine maintenance	General Fund, volunteers	TBD
		Construct pavilion	DNR Grant General Fund	TBD
		Install message board	DNR grant, volunteers, General Fund	TBD
		Complete exercise course	DNR grant, volunteers, General Fund	TBD
		Install bike rack	DNR grant, volunteers, General Fund	TBD
		Install road signs directing traffic to parks	General Fund, volunteers	TBD
2025 and beyond				
	Mill Road Park	Perform routine maintenance	General Fund, volunteers	TBD

		Install kayak/canoe takeout on Galien River bank	Grant funding, donations, volunteers	TBD
		Install boardwalk along Mill Road connecting two parks	Grant funding, donations, volunteers	TBD
	Weesaw Park	Perform routine maintenance	General Fund, volunteers	TBD
		Install fireplace in pavilion	Grant funding, donations, volunteers	TBD

# Appendix

## Four Surveys

### 2010 Survey

May 20, 2010

To All Residents of Weesaw Township;

The Weesaw Township Parks & Recreation Committee is in the process of updating their 5-Year Plan for the years 2011 – 2015. The purpose of the plan is to assess the recreational needs of the township and implement these needs into action where appropriate. Part of this process includes this survey of all residents. We ask each of you to complete this survey and drop it off at the township hall or mail it to: Weesaw Township Parks & Recreation Committee, PO Box 38, New Troy, MI 49119. We ask this be done as soon as convenient for you but we need to receive them no later than June 18, 2010.

The results of the survey will be shared with the public at an open meeting on Monday, July 19, 2010 beginning at 7:00 pm at the Weesaw Township Hall. You are invited to attend this meeting to ask questions, share ideas and provide further input.

In the past five years the Parks & Recreation Committee with the support of the Weesaw Township Board has improved Mill Road Park with the addition of a grill, trash barrel, picnic table and bench. The park has also been cleaned up of overgrowth and trash. This has led to a significant increase of its use by many people. Today you can find families enjoying a picnic, people fishing from the bridge, and some just soaking up the sun on the deck. We plan to replace the bench that was thrown into the river last fall by vandals, and continue to keep this park clean and safe for everyone to enjoy.

As you are probably aware the township recently completed the purchase of 8.49 acres of land from the Friends of New Troy for a park. This is most of the open land from the former New Troy Elementary School. Current plans include improving the current state of playground equipment, erect a sign on the front lawn, look into the possibility of a pavilion / picnic area, consider additional recreational facilities in the park, keep the lawn mown and attractive.

This new park joins the current Mill Road Park in the Weesaw Township Parks system.

Please take a few minutes and complete the following survey. If you would like please make copies for others in your household, including your children to fill out as well. We would welcome any comments concerning Weesaw Township Parks & Recreation just write them down on the back of the page.

Meetings are held the third Monday of each month beginning at 7:00 pm at the township hall.

Thank You for your Cooperation

Paul J. Pantaleo

Chairman

Weesaw Township Parks & Recreation Committee

Please Return To:  
Survey 2010  
Weesaw Township Parks & Recreation Committee  
PO Box 38  
New Troy, MI 49119

1. Do you live in Weesaw Township, please circle:  
Yes                      No
  
2. Your gender. Please circle:  
Male                      Female
  
3. Your Age, please circle  
19 and under              20-29                      30-39  
40-49                      50 – 64                      65 and older
  
4. Do you feel that the area recreational facilities meet your needs? Please circle  
Yes                      No
  
5. Do you feel that there are sufficient opportunities for children in the area to use their spare time appropriately?  
Yes                      No
  
6. What method of funding would you support for the development of parks and recreation facilities in the township? Circle any that apply.  
Bonds                      User Fees  
Millage                      Grants  
Other ideas you may have \_\_\_\_\_
  
7. Do you feel it is important to preserve and protect our natural areas for future generations to enjoy? Please circle  
Yes                      No
  
8. Would you volunteer your time and talents to help construct and / or maintain facilities in our township parks? Please circle  
Yes                      No

Please rank the top three activities that are of most importance to you. Also circle any of these activities in which you have an interest in having available in Weesaw Township. Feel free to make any comments you like about any activity listed – or list those which may be missing and you are interested in.

Baseball / Softball

Basketball

Bicycling

Boating / Sailing / Canoeing

Camping

Cross Country Skiing

Fishing

Fitness Activities / Fitness Course

Football

Golf (Disc or Miniature)

Horse Back Riding

Horseshoes

Hunting

Ice Skating / Hockey

Pavilion for Family Gatherings

Picnicking

Playground Activities

Rollerblading / Roller skating

Shuffleboard

Snowmobiling

Sledding

Soccer

Swimming

Target Shooting either Archery or Gun

Tennis

Volleyball

Walking / Hiking / Running Trails

Wildlife / Bird Watching

Other

## 2010 Survey Results

Mailed 825 surveys with 15 returned undeliverable for a total of 810 surveys delivered. Received 104 responses representing a 12.8% return, which is above the national average of 7-10%. All comments listed are exactly as stated on the survey.

### Questions:

1 Do you live in Weesaw Township?

Yes 103

No 1

Comments: Yes, Part Time

2 Your Gender:

Male 46

Female 49

3 Your Age:

19 & under 2

20 – 29 4

30 – 39 5

40 – 49 10

50 – 64 37

65 & older 38

4 Do you feel that the area recreational facilities meet your needs?

Yes 44

No 41

Comments: Probably would not use (3 surveys had)

My needs are well met but facilities could probably be improved for others in different age groups.

Not at this time

Never used

Picnic shelter for public.

Playground updated

5 Do you feel that there are sufficient opportunities for children in the area to use their spare time appropriately?

Yes 28

No 51

Comments:

No children

2 surveys had?

Not at this time

Don't use

To wreck everything – yes

I don't think that's a townships job. It's the parents

No facilities here or activities – only school stuff!

6 What method of funding would you support for the development of parks and recreation facilities in the township?

Bonds 12

User Fees 32  
Millage 25  
Grants 58

Comments:

3 mentioned - None  
None, limit spending  
2 surveys had?  
Parents  
Our taxes should pay for it!  
4 surveys mentioned - Fund Raisers  
3 surveys mentioned – None of the above-no funding  
Donations, the State of Michigan & the people of Weesaw  
Donations  
Ask the community to help with fund raisers  
Stop spending money  
Not needed – Do NOT use my tax money  
Other ideas  
Not sure??  
We are taxed to much now  
Donations / Fund Raisers  
Open ATV on local roads  
Don't Support  
Volunteers, donations  
No Taxes

7 Do you feel it is important to preserve and protect our natural areas for future generations to enjoy?

Yes 82

No 7

Comments:

8 Would you volunteer your time and talents to help construct and/o maintain facilities in our township parks?

Yes 43

No 43

Comments:

Age Permitting  
Not at this time  
Retired – not here much  
Age – 81  
Unable  
If available  
Limited time available  
No – due to age  
2 surveys mentioned – Maybe  
I'm getting too old but would donate \$ to a fund to hire qualified people  
Yes, if it is something I could still do  
No – Don't have time

Possibly, would like to, yes!?  
 To old to help out  
 Probably

General Comments:

Congratulations on doing a great job Paul! Good Luck!  
 I am a Res. not for the purchase of the property by the township  
 It is a waste of money. Kids would rather stay inside and play games on TV. I can't see how Irene went along with this. How many times will the board use the park?  
 Not interested in parks & recreation. Not a sport person – Never had time. Live on a farm out in the country  
 This Survey Should have been taken BEFORE Land Purchase  
 A park needs a pavilion & grills at least. Maybe some nature trails connecting the 2 park areas.

**Activities:**

*Ranked by importance with # of Responses – Activity – Rank (1<sup>st</sup>-2<sup>nd</sup>-3<sup>rd</sup>) - Comments*

42	Pavilion for Family Gatherings (5-2-2)	
36	Walking / Hiking / Running Trails (6-5-1)	Three mentioned walking
32	Wildlife / Bird Watching (1-2-3)	One mentioned wildlife
29	Playground Activities (2-1-3)	One vote each #4 & 7
28	Picnicking (0-3-2)	
22	Sledding (0-1-2)	
18	Baseball / Softball (0-0-3)	Little league or softball league
	Fishing (2-3-3)	One vote #6
17	Golf (disc or miniature) (2-0-0)	Disc course and miniature golf
16	Fitness Activities / Fitness Course (0-3-1)	One mentioned fitness course
	Bicycling (1-0-1)	One vote #10
15	Tennis	One vote #6
13	Basketball	One vote #4
11	Horseshoes (2-0-0)	
	Boating / Sailing / Canoeing (0-1-0)	Five mentioned canoeing
10	Camping (2-0-0)	
	Swimming (0-0-1)	
	Soccer	
	Target Shooting either Archery or Gun	
9	Cross Country Skiing (0-2-0)	One vote #5
	Shuffleboard	One vote each #5 & 8
7	Hunting (1-1-1)	
	Ice Skating / Hockey (1-0-0)	One mentioned ice skating
	Volleyball (0-0-1)	
	Snowmobiling (0-1-0)	
6	Football	One vote #9
5	Horse Back Riding	
	Rollerblading / Roller Skating (0-0-1)	
	Other non-listed items:	



Dancing

Movies

Work / Community Service / Picking up trash (1-0-0)

**General Comments:**

Sorry none of these interest me

85 years old, not able to participate in any of these activities

I think current projects are good ideas. Don't see need to spend additional money

Promo idea: "Weesaw Township: Nature's Affection!"

Something for seniors

Dog park

None of the above

There will too many bugs to get any use out of park

Mine was blank on second side but I added 2 things

This is a wonderful idea so keep up the good work. Thank you so very much!

Maybe some talent shows or drama plays etc.

Sr. Citizen – could care less. Walk with canes

We need to keep activities where we can keep it nice and quiet

ATV on back roads

As many as possible / practical

No to taxes

All of these suggestions are great.

The younger people of this area would be more interested in these activities than me.

## 2014 Survey

### Weesaw Township Park Survey

Weesaw Township is considering improvements to Weesaw Township Park, which is located in New Troy, on California Road. We want to hear what you think regarding activities, facilities, and improvements in our park.

Please complete the following brief survey and return it to the Township **by September 15, 2014** in one of the following ways:

1. Place it in the Survey Box.
2. Return it with your property taxes by mail or in person. At Township Hall, use the drop box outside or place your survey in the container inside the front door.
3. Mail it to Weesaw Township, 13518 State Street, PO Box 38, New Troy, MI 49119.
4. You may also complete this survey online: [www.weesawtownship.org/parksurvey](http://www.weesawtownship.org/parksurvey).

Thanks for your help.

---

### Survey

Your Zip Code: \_\_\_\_\_ Your Township: \_\_\_\_\_

Gender: \_\_\_ Male \_\_\_ Female                      Age: \_\_\_\_\_

How many in your household are in the following age groups?

0-10 years old \_\_\_\_, 11-18 \_\_\_\_, 19-35 \_\_\_\_, 35-50 \_\_\_\_, Over 50 \_\_\_\_

How often do you visit Weesaw Township Park? (Check one):

___ Daily	___ Weekly	___ Twice a month	___ Monthly
___ Every 2-6 months	___ Every 6- 12 months	___ Once per year	___ Never

Over, please

Following are some of the improvements that Weesaw Township is considering for our park. Check those that you think are needed:

- |   |  |  |   |     |
|---|--|--|---|-----|
| <input type="checkbox"/> Picnic tables, grills, waste baskets | <input type="checkbox"/> Benches                                   | <input type="checkbox"/> Walking path        | <input type="checkbox"/> Resurfaced basketball courts | The |
| <input type="checkbox"/> Baseball field                       | <input type="checkbox"/> Children's playground equipment           | <input type="checkbox"/> Nature trail        | <input type="checkbox"/> Nature viewing platforms     |     |
| <input type="checkbox"/> Exercise stations                    | <input type="checkbox"/> Horse shoe pit                            | <input type="checkbox"/> Tennis courts       | <input type="checkbox"/> Pavilion                     |     |
| <input type="checkbox"/> Running/jogging track                | <input type="checkbox"/> Handicapped accessible path into the park | <input type="checkbox"/> Restroom facilities | <input type="checkbox"/> Other (List)                 |     |

Township is especially considering improvements at the front of Weesaw Park, at the top of the hill, adjacent to the parking lot and California Road. Would you favor the addition at this location of (Check your choices):

- Benches
- Pavilion with grill, picnic tables, and waste baskets
- Horseshoe pit
- Other (Please explain):

The Weesaw Township Board and Parks Committee will pursue grants and donations to fund park improvements. Check other funding methods that you think are appropriate:

- Township Parks Millage
- Private Sponsorship
- Recreation/rental fees
- Other (Please describe):

Do you have other suggestions for improving Weesaw Township Park? Please comment:

**Weesaw Township Park Survey: Summary of Responses**

Total Surveys: 108

Zip Codes:

49106: 2  
 49107: 19  
 49113: 16  
 49119: 14  
 49125: 28  
 49127: 1  
 49128: 22

Townships:

Weesaw: 83  
 Berrien: 1  
 Lake: 3  
 Galien: 1  
 Lincoln: 1

Male respondents: 49

Female respondents: 54

Respondents ages:

20 or under: 3  
 21-35: 10  
 36-50: 10  
 50-65: 33  
 66 and up: 42

Age groups in respondent households:

0-10 years: 11  
 11-18: 8  
 19-35: 30  
 35-50: 28  
 Over 50: 130

Visitation frequency:

Daily: 1  
 Weekly: 12  
 Twice monthly: 2  
 Monthly: 8  
 2-6 Months: 8  
 6-12 Months: 8  
 Once yearly: 16  
 Never: 47

Park improvements needed:

(# 1) Picnic tables, grills, waste baskets: 40

(# 4 tied) Benches: 35

(# 3) Walking path: 36

Resurfaced basketball courts: 15

Baseball field: 14

Children's playground equipment: 31

(# 4 tied) Nature trail: 35

Nature viewing platforms: 21

Exercise stations: 11

Horseshoe pit: 16

Tennis courts: 7

Pavilion: 19

Running/ jogging track: 12

Handicapped accessible path into the park: 15

(# 2) Restrooms: 39

Other: None, seeing as how I don't use it; None; Bike trail; Nothing; None; None; None; But who would keep them up? None to all; sculpture/fine art

Needed improvements at park front

Benches: 47

Pavilion with grill, picnic tables, and waste baskets: 27

Horseshoe pit: 11

Other: Restroom; None; None; None; None; None; Kiosk explaining history of Weesaw (Chief) and what was here before the park; None; No fires unless a fireproof container is supplied to dispose of coals and embers; Restrooms.

Recommended funding options

Township Parks Millage: 26

Recreation/rental fees: 36

Private Sponsorship: 43

Other: Roads, roads, roads; Roads;  
Fund raiser; Blueberry  
Festival—bring back;  
Amateur ORV races w/ only  
fees; Out of state residents  
pay extra fees—like 2 times  
the amount that MI  
residents pay for rental fees  
or admission to the park for  
special events; Bring bands

to play music—under the  
pavilion and bring in  
funding—pay admission to  
get in; None; None; None;  
Add option to property tax  
to add \$5 or \$10 to support  
the park, as the state does;  
No township parks millage;  
Donation box.

### Survey Comments

#### Park Improvements

These have all been discussed and are part of the rec plans including their priorities! There has been no follow through. Nothing here is new—just asking what has been asked and answered in the past. Volunteers have offered to help but been turned down by Twp. A child's playground was donated and never used! What happened to it??

I have no ideas, as I have not been there.  
A dog park, of course.

#### Improvements to Front of Park

No grill, picnic tables, horseshoe pit—put in park as previously planned. Flowers that are maintained. Beautify New Troy. Nothing wrong with green space. Not really sure—all sound very good. Have holiday parties that town can come to, Summer Craft camps, or fun fairs for town to join in. A newsletter or calendar of events for people to know what is happening and going on there. Do not go there.

#### Park Funding

Use funds you have. This is a public park!

#### Comments

Forget the park. Put money into roads. Priority is roads.

FIX OUR ROADS!!!

Will visit park in future

[Park] not yet used

I don't use it—I don't want to pay for it!!

Nothing needed. Please use money to fix roads! Nothing needed. Please use money to fix roads! Write grants to fix roads—parks not needed. No benefit to Weesaw Twp!

Fix roads for residents; if fun is your priority, fix the roads for ACC bike riders! Don't waste our money. Fix the roads in the country and sidewalks downtown.

ORV trails; shooting range.

Before you improve the parks, what about fixing our roads! You only seem to do the minimum. Hopefully, there will be other people to run for the township board.

The roads need fixing before the parks.

The township board should try to make attending the monthly board meeting more inviting. Board should come up with activities to promote/building "community" spirit. The board should ask why is that people do not come to the meetings. Why is that other towns (Baroda + Bridgman) has [sic] activities to promote their communities but not Weesaw. Do something! Our roads need fixing! Do something. You are suppose [sic] to be the leaders . . . lead!

Township should take pride in both parks—show it by action—not words. You have pushed help away in past because of Board actions. With proper planning there is adequate money available in twp. funds. It's the people's money—use for the people!

We need a dog park, please!

Quit using our tax money for something no one uses.

I seldom see anyone using current facilities. Sell the park and save Twp. monies.

The park is a great idea for New Troy. However, there are a lot of undesirable kids that hang out there. Because of that, I do not let my child go down there unless she is with us or with a group of kids. I have found broken bottles and needles down there. The three boys that are around when I drive through usually leave when I go down there. Why??? Does anyone monitor activities of children in the park?

Save the money and fix the roads.

Not a good idea to keep putting things on taxes. We pay enough. No more.

Please don't interfere with the sledding hill.

No millage!

Let's spend money on the roads first. Can we hire our own local crew?

The waste baskets that are already they need to be checked and dumped more often. Spend more money on the roads instead; especially Sawyer and Pardee roads. Their condition is pathetic and is unsafe.

None (improvements) are actually needed. I don't think that it would get used as much for the time and money that would go into it. Improve the roads.

I don't know where it is.

**Survey Respondent Ages: 83 Total**

<b>Percentages</b>	<b>20 and under</b>	<b>21-35</b>	<b>36-50</b>	<b>50-65</b>	<b>66 and up</b>
<b>100%</b>					
<b>90%</b>					
<b>80%</b>					
<b>70%</b>					
<b>60%</b>					
<b>50%</b>					<b>43%</b>
<b>40%</b>				<b>35%</b>	
<b>30%</b>					
<b>20%</b>			<b>10%</b>		
<b>10%</b>	<b>1%</b>	<b>9%</b>			
<b>Totals</b>	<b>1</b>	<b>8</b>	<b>9</b>	<b>29</b>	<b>36</b>

**Age Groups in Respondent Households: 190 Total Residents**

<b>Percentages</b>	<b>0-10</b>	<b>11-18</b>	<b>19-35</b>	<b>36-50</b>	<b>Over 50</b>
<b>100%</b>					
<b>90%</b>					
<b>80%</b>					
<b>70%</b>					<b>62%</b>
<b>60%</b>					
<b>50%</b>					
<b>40%</b>					
<b>30%</b>					
<b>20%</b>			<b>14%</b>	<b>12%</b>	
<b>10%</b>	<b>5%</b>	<b>4%</b>			
<b>Totals</b>	<b>11</b>	<b>8</b>	<b>28</b>	<b>24</b>	<b>119</b>

## 2018 Survey

### Weesaw Township Parks Survey

Weesaw Township is considering improvements to its two parks, Mill Road Park, at the Galien River, and Weesaw Park, which is located in New Troy, on California Road. We want to hear from you what improvements would best meet township residents' recreational interests.

Please complete the following brief survey and return it to the Township **by December 31, 2017** in one of the following ways:

1. Place it in the Survey Box inside the front door of Township Hall.
2. Return it with your property taxes by placing it in the drop box outside Township Hall.
3. Mail it with your property taxes or separately to Weesaw Township, 13518 State Street, PO Box 38, New Troy, MI 49119.

Thanks for your help.

---

### Survey

Your Gender:  Male  Female      Age: \_\_\_\_\_

How many in your household are in the following age groups?

0-10 years old \_\_\_\_\_, 11-18 \_\_\_\_\_, 19-35 \_\_\_\_\_, 35-50 \_\_\_\_\_, Over 50 \_\_\_\_\_

How often do you visit Mill Road Park or Weesaw Township Park? (Check one):

Daily       Weekly       Twice a month       Monthly

Every 2-6 months       Every 6-12 months       Once per year       Never

Over, please



Following are some of the improvements that Weesaw Township is considering for our parks. Identify **five (5)** improvements that you think are most needed. Number them 1 to 5, with "1" being the most important change. As you complete this survey, please ask your family to offer their suggestions for park improvements.

- \_\_\_ Picnic tables,  
grills, waste  
baskets
- \_\_\_ Benches
- \_\_\_ Walking path
- \_\_\_ Resurfaced  
basketball  
courts
  
- \_\_\_ Baseball field
- \_\_\_ Children’s  
playground  
equipment
- \_\_\_ Nature trail
- \_\_\_ Nature  
viewing  
platforms
  
- \_\_\_ Exercise  
stations
- \_\_\_ Horse shoe pit
- \_\_\_ Tennis courts
- \_\_\_ Pavilion
  
- \_\_\_ Running/  
jogging  
track
- \_\_\_ Handicapped  
accessible  
path into the  
park
- \_\_\_ Restroom  
facilities
- \_\_\_ A gazebo at  
the front of  
Weesaw  
Park
  
- \_\_\_ Other (Please  
describe.)

Weesaw Township Board and Parks Committee will pursue grants and donations as part of the funding for future park improvements. Thanks for your participation in this important survey of Weesaw Township residents’ recreational interests.

**Weesaw Township Park Survey: Summary for 89 Surveys, 05/17/18**

9.8% of approximately 900 surveys mailed to property owners were returned.

Male respondents: 47

Female respondents: 43

Average age reported: 69.46 years

Average age reported: 60.43 years

Age groups in respondent households, with percentages of Weesaw Township population in each age group (US Census, 2016 American Community Survey):

0-10 years: 15	6.8%	35-50: 16	18.2%
11-18: 12	15.8%	Over 50: 106	48.2%
19-35: 29	10.9%		

Average age in Weesaw Township: 48.9 years

Visitation frequency:

Daily:	2-6 Months: 9
Weekly: 8	6-12 Months: 6
Twice monthly: 6	Once yearly: 13
Monthly: 6	Never: 38

Park improvements needed:

Twenty respondents did not vote for any park improvements.

Top vote getters, 2018 survey:

1. Restrooms 44 votes, avg score rank 3
2. Walking path 41, avg score rank 2
3. Nature trail 38, avg score rank 6
4. Picnic tables, grills, waste baskets 35, avg score rank 7
5. Playground equipment 24, avg score rank 5
6. Nature viewing platforms 22, avg score rank 9
7. Pavilion 21, avg score rank 8
8. Benches 20, avg score rank 11

Lowest average score (1 being the most important change desired):

1. Handicapped accessible path into the park (the lowest average score, which indicated the strongest change desired)
2. Walking path
3. Restrooms
4. Running/jogging track
5. Playground equipment
6. Nature trail
7. Picnic tables, grills, waste baskets
8. Pavilion

Top vote getters, 2014 park survey:

1. Picnic tables, grills, waste baskets
2. Restrooms
3. Walking path
4. Tied: Benches and nature trail
5. Nature viewing platforms

Top vote getters, 2011 park survey:

1. Pavilion
2. Trails
3. Wildlife/bird watching
4. Playground activities
5. Picnicking

<b><u>Category</u></b>	<b><u># Votes</u></b>	<b><u>Ranking by Number of Votes</u></b>	<b><u>Average 1-5 Score</u> <b>Lower score = higher priority</b></b>	<b><u>Ranking by Average Score from 1 to 5</u></b>
Picnic tables, grills, waste baskets	36	4	2.71	7
Benches	21	8	3.14	11
Walking path	42	2	2.02	2
Resurfaced basketball courts	8	13/tied	3.37	13
Baseball field	11	11/tied	3.63	15
Playground equipment	25	5	2.41	5
Nature trail	41	3	2.33	6
Nature viewing platforms	24	6	2.75	9
Exercise stations	9	12	3.50	14
Horse shoe pit	11	11/tied	3.36	12
Tennis courts	4	14	4	17
Pavilion	22	7	2.72	8
Running/ jogging track	11	11/tied	2.20	4
Handicapped accessible path into the park	15	9	2.00	1
Restrooms	44	1	2.23	3
Gazebo at front of Weesaw Park	12	10	3.74	16
Other:	8	13/tied	3.12	10

## Survey Written Comments

- Age 82, improvements list left blank: "Did not know we had 2 parks! Fix the roads. Don't even know where parks are located." [Descriptive statement at end of survey crossed out and typed over with: "Fix Roads." "Roads."]
- Ages 74, 75, improvements list left blank: "Do not know as we eve [?] never use it."
- Age 60, improvements list left blank: "None of the above. It could raise property taxes."
- Age 70: "Outdoor pickleball court/basketball"
- Age 62: "Dispenser for dog waste bags"
- Age not given: "We do not use or visit the parks."
- Age 39: "I would like to see a possible kayak/canoe launch from Mill bridge area. With the possibility of keeping the waterway clear enough to paddle all the way to Glassman Park in New Buffalo at the 94 bridge. This could draw more people to our hidden treasure we call New Troy!"
- Age not given: "At Mill Road Park a wood or gravel area for people to stand or walk on and do fishing under the bridge."
- Age 29: "Never been there so I don't know what they need."
- Age 33: "All great ideas! Thank you! Olivia Schutze"
- Age 32: "Paved walking path"
- Age 32: "We visit Baroda Township's Hess Lake Park a lot. In my mind there is no reason why Weesaw Township couldn't have a park like that."
- Ages 71, 74: Other 2—"Easy access to areas for fishing Galien River at Mill Road Park."  
Other—3 "Parking lot resurfaced at Weesaw Park. "Other—4 "Move re-cycle bin to another location."
- Age 65: "We never visit the parks but we will soon!"
- Age 26, no votes: Other—"Unknown."
- Age 83: Other—"None."
- Age 67: "Never visit Mill Road Park. Visited Weesaw Park years ago for sledding." Other 5—"Improvements that help accommodate individual, small, and larger group gatherings."
- Age 68: "Never visit Mill Road Park. Visited Weesaw Park years ago."
- Age 63: "Thanks for the terrific work!"
- Age 66, no votes: Other—"Nothing."
- Age not given: "We do not use the parks."
- Age 82: "Can't answer. I've never been to the park."
- Age 61: "Dog park!"
- Age not given: "Fix roads. The roads should be our only concern. **FIX ROADS.** Stop wasting money."
- Age 63: "Fund the park with donations not tax dollars."
- Age 60: "None of the above. It could raise property taxes."

## 2021 Survey

The fourth Weesaw Township parks survey was distributed on July 11 and 23, 2021, at two Friends of New Troy fund raisers. The respondents' choices for needed park improvements, in order of preference:

- Nature trails
- Bathrooms
- Walking path
- Playground
- Tied: Pavilion and Benches

62 surveys returned.

38 respondents listed zip codes covering Weesaw Township.

16 listed zip codes from near and far:

Harbert, MI; Baroda; Stevensville; Bridgman; Union Pier; St. Clair Shores, MI; Shelby, MI; Macomb, MI; Canton, MI; West Lafayette, IN; Chicago, IL.

Local and regional parks visited by respondents:

Bridgman Playground  
Chikaming Township Park & Preserve (Three Oaks)  
Grand Mere State Park  
Hess Lake Park (Baroda)  
Indiana Dunes National Sea Shore  
Jen Jensen Preserve (Sawyer)  
Lincoln Township Park (Stevensville)  
Mill Road Park  
New Buffalo Splash Pad  
Sarett Nature Center  
Timber Town Park (Chelsea, MI)  
Warren Dunes State Park  
Warren Woods State Park  
Weesaw Township Park  
Weko Beach (Bridgman)

**We want your suggestions!  
Help Improve Weesaw  
Township Park**

Weesaw residents have offered many suggestions to make Weesaw Township Park a better place to visit, such as a walking path, nature trail, new playground equipment, exercise stations, benches, restrooms, a pavilion, additional picnic tables and grills.

What would you like to see in Weesaw Township Park? Write your suggestions below:

Your ZIP code: \_\_\_\_\_

When you visit local parks, nature centers, or other recreational places, where do you go? Help us see what you think makes a good park. Thanks for your help.

<b>Park amenities most desired, with vote count</b>	<b>Amenities receiving multiple votes</b>	<b>Other amenities proposed by respondents</b>
28 Nature trails 20 Bathrooms 18 Walking path 16 Playground Tied: 14 Pavilion, 14 Benches	10 Picnic tables with grills 08 Exercise stations 08 Dog park 07 Pickleball courts 07 Basketball courts 03 Swings 03 Bike path 03 Baseball field 02 Zip line 02 Splash pad 02 Nature trails with exhibits 02 Kayak/canoe takeout/launch 02 Historic plaques telling Weesaw history 02 Easy trails 02 ADA accessible features	Access to lower level Butterfly garden Cat park Community garden Fenced play area Gardens containing plants grown by Native Americans and early European settlers Gazebo Geocaching/QR trail Jungle gym Long trails Merry go round Nature trail maps Parking Pool Short trails Slides Spider web climber Trash cans Volley ball court Water overlook World Globe dramatizing Weesaw as Center of the World, where visitors could have their picture taken

# 30-Day Public Review

## Public Notices: Date, Locations, Instructions

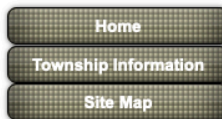
Copies of the Weesaw Township Parks & Recreation Plan were made available from 8/19/2021 to 9/10/21 online, at the township's website, weesawtownship.org; at Weesaw Township Hall, 13518 State St., New Troy, MI, 49119; and in the library of the local community center, The Friends of New Troy, 13372 California Rd, New Troy, MI.



## Weesaw Township

### Weesaw Parks

Weesaw Township  
Parks Web page with  
link to Parks Plan  
review notice  
(below)



The Weesaw Township Parks Committee has developed a plan to help our Township improve our parks for residents and visitors. To view a draft of the plan, click on the following link. Wait for the Plan to load.

[Weesaw Township Parks and Recreation Plan, 2021-2026](#)

You may also read the plan in printed form at these locations:

- at Weesaw Township Hall, 13518 State St., New Troy, MI 49119, Monday, Tuesday, Wednesday, 9 a.m.-12 p.m. and 1-4 p.m.
- at Friends of New Troy Community Center Library, 13372 California Rd., New Troy, MI 49119, Monday-Saturday, 10 a.m.-12 p.m., and Monday-Friday, 5:30-7 p.m.

To develop this plan, the Weesaw Township Parks Committee gathered ideas and opinions from Township residents and visitors. If you have comments to make, we'd like to hear them. The Committee will receive comments for 30 days, until September 17, 2021. Send us your thoughts in writing:

- by email. To send us a message, click [here](#).
- by regular mail. Send your letter to Weesaw Township Parks Committee, Weesaw Township, PO Box 38, New Troy, MI 49119.

### **Weesaw Township Notice of 30-Day Public Review Weesaw Township Parks and Recreation Plan, 2021-2026**

Notice is hereby given that a draft of the Weesaw Township Parks and Recreation Plan, 2021-2026, is available for public review and comment for thirty (30) days, from August 19, 2021 to September 17, 2021. Copies of the plan are available:

- online at [weesawtownship.net](http://weesawtownship.net).
- at Weesaw Township Hall, 13518 State St., New Troy, MI 49119, Monday, Tuesday, Wednesday, 9 a.m.-12 p.m. and 1-4 p.m.
- at Friends of New Troy Community Center Library, 13372 California Rd., New Troy, MI 49119, Monday-Saturday, 10 a.m.-12 p.m., and Monday-Friday, 5:30-7 p.m.

Written comments will be received until the close of business on September 17, 2021:

- by email at [weesawparks@gmail.com](mailto:weesawparks@gmail.com).
- by regular mail at Weesaw Township Parks Committee, Weesaw Township, PO Box 38, New Troy, MI 49119.

A formal public hearing for adoption of the Plan will be held following the 30-day review period.

Signature: Wanda Green, Weesaw Township Clerk

Publication date: August 19, 2021

**AFFIDAVIT OF PUBLICATION**

IN THE MATTER OF

PUBLIC NOTICE

WEESAW TOWNSHIP, MICHIGAN

A DRAFT OF THE 2021-2026  
PARKS AND RECREATION PLAN  
IS AVAILABLE FOR PUBLIC REVIEW  
AND COMMENT FROM  
AUGUST 19, 2021 - SEPTEMBER 17, 2021

A FORMAL PUBLIC HEARING WILL BE  
HELD FOLLOWING REVIEW PERIOD

STATE OF MICHIGAN  
County of Berrien

Randy Hendrixson being duly sworn, deposes and says the annexed printed copy of a notice was published in the Berrien County Record, a newspaper printed and circulated in said State and County, published in the English language for the dissemination of legal news, having a bona fide list of paying subscribers and established, published, and circulated at least once a week without interruption for at least 1 year in said County, and that said notice was published in said newspaper on:

August 19,

A.D. 2021, that he is the agent of the printers of said newspaper and knows well the facts stated therein.

*Randy Hendrixson*  
Randy Hendrixson

Subscribed and sworn to before me on this  
19<sup>th</sup> day of August A.D. 2021

My commission expires: 6/14/2023

*T.L. Roberts*  
T.L. Roberts

T.L. ROBERTS  
NOTARY PUBLIC - STATE OF MICHIGAN  
COUNTY OF BERRIEN  
My Commission Expires June 14, 2023  
Acting in the County of Berrien

**Weesaw Township  
Notice of 30-Day Public Review  
Weesaw Township Parks and Recreation Plan, 2021-2026**

Notice is hereby given that a draft of the Weesaw Township Parks and Recreation Plan, 2021-2026, is available for public review and comment for thirty (30) days, from August 19, 2021 to September 17, 2021. Copies of the plan are available:

- online at [weesawtownship.net](http://weesawtownship.net).
- at Weesaw Township Hall, 13518 State St., New Troy, MI 49119, Monday, Tuesday, Wednesday, 9 a.m.-12 p.m. and 1-4 p.m.
- at Friends of New Troy Community Center Library, 13372 California Rd., New Troy, MI 49119, Monday-Saturday, 10 a.m.-12 p.m., and Monday-Friday, 5:30-7 p.m.

Written comments will be received until the close of business on September 17, 2021:

- by email at [weesawparks@gmail.com](mailto:weesawparks@gmail.com).
- by regular mail at Weesaw Township Parks Committee, Weesaw Township, PO Box 38, New Troy, MI 49119.

A formal public hearing for adoption of the Plan will be held following the 30-day review period.

Publication date: August 19, 2021

**LEGALS**  
BERRIEN COUNTY RECORD, BUCHANAN, MICHIGAN AUGUST 19, 2021 7

**THIRD INSERTION**

**NOTICE OF FORECLOSURE  
BY ADVERTISEMENT**

Notice is given under section 3212 of the revised judicature act of 1961, 1961 PA 236, MCL 600.3212, that the following mortgage will be foreclosed by a sale of the mortgaged premises, or some part of them, at a public auction sale to the highest bidder for cash or cashier's check at the place of holding the circuit court in Berrien County, starting promptly at 11:00 AM, on September 3, 2021. The amount due on the mortgage may be greater on the day of sale. Placing the highest bid at the sale does not automatically entitle the purchaser to free and clear ownership of the property. A potential purchaser is encouraged to contact the county register of deeds office or a title insurance company, either of which may charge a fee for this information:

Name(s) of the mortgagor(s): JOHN J. NOGA JR., unmarried  
Original Mortgagee: Mortgage Electronic Registration Systems, Inc., as mortgagee  
nominee for lender and lender's successor and/or assigns  
Foreclosing Assignee (if any): Name of Mortgage LLC d/b/a Mr. Cooper  
Date of Mortgage: July 15, 2013  
Date of Mortgage Recording: July 26, 2013  
Amount claimed due on date of foreclosure: \$122,229.63  
Description of the mortgaged premises: Situated in VILLAGE OF THREE, Berrien County, Michigan, and described as:

Lot 153 Warrens Addition to Village of Three Oaks, according to the plat thereof, as recorded in Book 2 of Plats, Page 28, Berrien County Records.

Common street address (if any): 202 Poplar St, Three Oaks, MI 49128-1067

The redemption period shall be 6 months from the date of such sale, unless determined abandoned in accordance with MCL 600.3241a; or, if the subject real property is used for agricultural purposes as defined by MCL 600.3240(16). If the property is sold at foreclosure sale under Chapter 32 of the Revised Judicature Act of 1961, pursuant to MCL 600.3278 the borrower will be held responsible to the person who buys the property at the mortgage foreclosure sale or to the mortgage holder for damaging the property during the redemption period.  
Attention homeowner: If you are a military service member on active duty, if your period of active duty has concluded less than 90 days ago, or if you have been ordered to active duty, please contact the attorney for the party foreclosing the mortgage at the telephone number stated in this notice.



in a debt collector.  
August 5, 2021  
item Hwy, Suite 145  
MI 48334

**Weesaw Township  
Notice of 30-Day Public Review  
Weesaw Township Parks and Recreation Plan, 2021-2026**

Notice is hereby given that a draft of the Weesaw Township Parks and Recreation Plan, 2021-2026, is available for public review and comment for thirty (30) days, from August 19, 2021 to September 17, 2021. Copies of the plan are available:

- online at [weesawtownship.net](http://weesawtownship.net).
- at Weesaw Township Hall, 13518 State St., New Troy, MI 49119, Monday, Tuesday, Wednesday, 9 a.m.-12 p.m. and 1-4 p.m.
- at Friends of New Troy Community Center Library, 13372 California Rd., New Troy, MI 49119, Monday-Saturday, 10 a.m.-12 p.m., and Monday-Friday, 5:30-7 p.m.

Written comments will be received until the close of business on September 17, 2021:

- by email at [weesawparks@gmail.com](mailto:weesawparks@gmail.com).
- by regular mail at Weesaw Township Parks Committee, Weesaw Township, PO Box 38, New Troy, MI 49119.

A formal public hearing for adoption of the Plan will be held following the 30-day review period.

Publication date: August 19, 2021

**Notice of Public Hearing and Public Comment Period on  
Buchanan City Master Plan**

The Buchanan City Planning Commissions will hold a public comment period ending with a public hearing at 7:00 p.m. on September 14, 2021 at Buchanan City Hall, 302 N. Redbud Trail, Buchanan, Michigan 49107.

The purpose of the comment period and public hearing is to invite and hear comments on the Proposed Master Plan for Buchanan City. At the hearing, all interested parties will be given an opportunity to be heard.

If you cannot attend the public hearing, written comments can be sent to Buchanan City Hall, 302 N. Redbud Trail, Buchanan, Michigan 49107 and must be received by September 14, 2021.

Individuals with disabilities may request necessary reasonable accommodations by submitting requests to the City Clerk, preferably at least 24 hours in advance.

The proposed plan can be reviewed at the Buchanan City Hall and at the Buchanan District Library during business hours. The plan can also be reviewed online at [www.swmnc.org/buchananmp.asp](http://www.swmnc.org/buchananmp.asp).

- ADSENT: Veilleux  
Call to Order: 7:00 PM
- Approved: Minutes of the August 9, 2021 meeting as written.
  - Approved: Financial Report for the month of July, 2021 as presented.
  - Approved: Payment of bills in the amount of \$14,458.29.
  - Approved: Amendments to the 2021-2022 Budget.
  - Approved: Reducing sewer charges for Cornell North LLC.
  - Approved: Removal of delinquent taxes from taxes for Cornell North LLC.
  - Approved: Charging \$6,300.00 for delinquent sewer for Cornell North LLC
  - Approved: Adoption of Resolution #20-8-9
  - Approved: Adding signature line to Village of Galien fence permits
  - Approved: Selling donated lot on Railroad St. to Brae Davis.
  - Approved: Raise in wage for Cleaning Staff to \$12.00 per hour.
  - Approved: Bell Mare using parking space in front for a fenced area.
  - Approved: Purchasing a plaque to welcome Bell Mare.
  - Approved: Adoption of a policy to limit committee meetings to invite only.
  - Approved: Donation of \$50.00 per brick for Memorial Sidewalk.
- Christine Palmer, Clerk



## Summary of Comments During 30-Day Review

No comments were received from any of the locations.

## Public Hearing

### Public Notices: Date, Time, Locations

Notice of a public hearing for the Weesaw Township Parks and Recreation Plan, 2021-2026, was posted on September 28, 2021, at Weesaw Township Hall, 13518 State St., New Troy, MI, 49119; online at the Weesaw Township website on September 30, 2021; and in the Berrien County Record newspaper on October 7, 2021.





# Weesaw Township

**Home**

- Home
- Township Administration
- Taxes
- Calendar/Special Meeting
- Fire
- Township Information
- Permits/Forms
- Links/Resources
- Contact Us
- Site Map



**FYI:**  
(Click for updates)

[Weesaw Township Parks and Recreation Plan Public Hearing, 10/20/2021](#)

[Employment Opening: Township Building/Zoning Administrator](#)

[History's Mysteries: How Weesaw Township Got Its Name](#)

[Contractors Bid Form](#)

[Berrien County Sheriff Contacts](#)

[Freedom of Information \(FOIA\) Requests](#)

**WEESAW TOWNSHIP PUBLIC HEARING**  
**Weesaw Township Parks & Recreation Plan**

WEESAW TOWNSHIP HALL  
Corner Berrien & State Sts., P.O. Box 38  
New Troy, MI 49119  
(269) 426-3002, Ext. 1#

DATE OF MEETING: Wednesday, October 20, 2021

TIME OF MEETING: 7:00 p.m.

PLACE OF MEETING: Weesaw Township Hall

**PURPOSE OF MEETING: Public Hearing to receive final public comments on the draft Weesaw Township Parks & Recreation Plan, 2021-2026. Following public comments, Township Board may take action to adopt plan and approve submission to Michigan Department of Natural Resources.**

This notice is posted in compliance with the Open Meetings Act, Public Act 267 of 1976, as amended, (MCL41.72a [2][3] and the Americans with Disabilities Act.

The Weesaw Township Board will provide necessary reasonable auxiliary aids and services, such as signers for the hearing impaired and audiotapes of printed materials being considered at the meeting, to individuals with disabilities at the meeting or public hearing upon ten (10) days prior notice to the Weesaw Township Board.

Individuals with disabilities requiring auxiliary aids or services should contact the Weesaw Township Board by writing or calling the Township Clerk at P.O. Box 38, New Troy, MI 49119, and Telephone (269) 426-3002, ext.1#.

Posted on: Tuesday, September 30, 2021

*Clerk's Signature*  
A copy of this notice will be kept on file in the Clerk's Office.

The contents of this website have been prepared by Weesaw Township. Weesaw Township does not warrant the accuracy, timeliness, suitability, or completeness of the information on this website. Nothing on this website should be understood as a claim or damages resulting from the misuse of information on this website.

This institution is an equal opportunity provider and employer. For more information, contact the Township Clerk at (269) 426-3002, ext. 1#.

# LEGAL NOTICES



BERRIEN COUNTY RECORD, BUCHANAN, MICHIGAN OCTOBER 7, 2021 7

**NOTICE OF FORECLOSURE BY ADVERTISEMENT**

Notice is given under section 3212 of the revised judicature act of 1961, 1961 PA 236, MCL 600.3212, that the following mortgage will be foreclosed by a sale of the mortgaged premises, or some part of them, at a public auction sale to the highest bidder for cash or cashier's check at the place of holding the circuit court in Berrien County, starting promptly at 11:00 AM, on November 5, 2021. The amount due on the mortgage may be greater on the day of sale. Placing the highest bid at the sale does not automatically entitle the purchaser to free and clear ownership of the property. A potential purchaser is encouraged to contact the county register of deeds office or a title insurance company, either of which may charge a fee for this information:

Name(s) of the mortgagor(s): WILLIAM BAKER AKA WILLIAM R. BAKER AND CONNIE BAKER AKA CONNIE F. BAKER, husband and wife  
 Original Mortgagee: Mortgage Electronic Registration Systems, Inc. as nominee for Horizon Bank,  
 National Association of its successors and assigns  
 Foreclosing As: Bank  
 Date of Mortgage: 12/15/2008  
 Amount claimed: \$61,928.82  
 Description of the property: Situated in Chippewa Township, Berrien County, Michigan and described as Lot 6 of Willow Plats, Page 13 of the Records.  
 Common street: Willow Dr, Berrien Springs, Michigan 49309  
 9595  
 The redemption period shall be 6

months from the date of such sale, unless determined abandoned in accordance with MCL 600.3241a; or, if the property is used for agriculture as defined by MCL 600.3240(1).  
 If the property is sold at for under Chapter 32 of the Revised Act of 1961, pursuant to MCL borrower will be held responsible person who buys the property mortgage foreclosure sale mortgage holder for damaging during the redemption period.  
 Attention homeowner: If military service member on your period of active duty has concluded less than 90 days you have been ordered to please contact the attorney foreclosing the mortgage at the number stated in this notice.  
 This notice is from a debt collector.  
 Date of notice: October 7, 2021  
 Trott Law, P.C.  
 31440 Northwestern Hwy., Farmington Hills, MI 48334  
 (248) 642-2515  
 1443750  
 (10-07)(10-28)

months from the date of such sale, unless determined abandoned in accordance with MCL 600.3241a; or, if the property is used for agriculture as defined by MCL 600.3240(1).  
 If the property is sold at for under Chapter 32 of the Revised Act of 1961, pursuant to MCL borrower will be held responsible person who buys the property mortgage foreclosure sale mortgage holder for damaging during the redemption period.  
 Attention homeowner: If military service member on your period of active duty has concluded less than 90 days you have been ordered to please contact the attorney foreclosing the mortgage at the number stated in this notice.  
 This notice is from a debt collector.  
 Date of notice: September 23, 2021  
 Trott Law, P.C.  
 31440 Northwestern Hwy., Suite 145 Farmington Hills, MI 48334  
 (248) 642-2515  
 1443753  
 (09-23)(10-14)

Potestivo & Associates, P.C.  
 251 Diversion Street, Rochester, MI 48307 248-853-4400

## AFFIDAVIT OF PUBLICATION

IN THE MATTER OF

PUBLIC HEARING NOTICE

WEESAW TOWNSHIP, MI

TO RECEIVE FINAL PUBLIC COMMENTS ON THE DRAFT 2021-2026 PARK & RECREATION PLAN

WEDNESDAY, OCTOBER 20, 2021 7 P.M.

STATE OF MICHIGAN  
County of Berrien

Randy Hendrixson being duly sworn, deposes and says the annexed printed copy of a notice was published in the Berrien County Record, a newspaper printed and circulated in said State and County, published in the English language for the dissemination of legal news, having a bona fide list of paying subscribers and established, published, and circulated at least once a week without interruption for at least 1 year in said County, and that said notice was published in said newspaper on:

October 7,

A.D. 2021, that he is the agent of the printers of said newspaper and knows well the facts stated therein.

*Randy Hendrixson*  
 Randy Hendrixson

Subscribed and sworn to before me on this  
 7<sup>th</sup> day of October A.D. 2021

My commission expires: 6/14/2023

*T L Roberts*  
 T L Roberts

T L ROBERTS  
 NOTARY PUBLIC - STATE OF MICHIGAN  
 COUNTY OF BERRIEN  
 My Commission Expires June 14, 2023  
 Residing in the County of Berrien

**WEESAW TOWNSHIP PUBLIC HEARING**  
**Weesaw Township Parks & Recreation Plan**

WEESAW TOWNSHIP HALL  
 Corner Berrien & State Streets., P.O. Box 38  
 New Troy, MI 49119  
 (269) 426-3002, Ext. 1#

DATE OF MEETING: Wednesday, October 20, 2021  
 TIME OF MEETING: 7:00 p.m.  
 PLACE OF MEETING: Weesaw Township Hall

**PURPOSE OF MEETING: Public Hearing to receive final public comments on the draft Weesaw Township Parks & Recreation Plan, 2021-2026. Following public comments, Township Board may take action to adopt plan and approve submission to Michigan Department of Natural Resources.**

This notice is posted in compliance with the Open Meetings Act, Public Act 267 of 1976, as amended, (MCL41.72a [2][3] and the Americans with Disabilities Act.

The Weesaw Township Board will provide necessary reasonable auxiliary aids and services, such as signers for the hearing impaired and audiotapes of printed materials being considered at the meeting, to individuals with disabilities at the meeting or public hearing upon ten (10) days prior notice to the Weesaw Township Board.

Individuals with disabilities requiring auxiliary aids or services should contact the Weesaw Township Board by writing or calling the Township Clerk at P.O. Box 38, New Troy, MI 49119, and Telephone (269) 426-3002, ext. 1#.

Publication date: Thursday, October 7, 2021

Clerk's Signature  
 A copy of this notice will be kept on file in the Clerk's Office.



INSERTION

FORECLOSURE ADVERTISEMENT

**WEESAW TOWNSHIP PUBLIC HEARING**  
**Weesaw Township Parks & Recreation Plan**

WEESAW TOWNSHIP HALL  
 Corner Berrien & State Streets., P.O. Box 38  
 New Troy, MI 49119  
 (269) 426-3002, Ext. 1#

DATE OF MEETING: Wednesday, October 20, 2021  
 TIME OF MEETING: 7:00 p.m.  
 PLACE OF MEETING: Weesaw Township Hall

**PURPOSE OF MEETING: Public Hearing to receive final public comments on the draft Weesaw Township Parks & Recreation Plan, 2021-2026. Following public comments, Township Board may take action to adopt plan and approve submission to Michigan Department of Natural Resources.**

This notice is posted in compliance with the Open Meetings Act, Public Act 267 of 1976, as amended, (MCL41.72a [2][3] and the Americans with Disabilities Act.

The Weesaw Township Board will provide necessary reasonable auxiliary aids and services, such as signers for the hearing impaired and audiotapes of printed materials being considered at the meeting, to individuals with disabilities at the meeting or public hearing upon ten (10) days prior notice to the Weesaw Township Board.

Individuals with disabilities requiring auxiliary aids or services should contact the Weesaw Township Board by writing or calling the Township Clerk at P.O. Box 38, New Troy, MI 49119, and Telephone (269) 426-3002, ext. 1#.

Publication date: Thursday, October 7, 2021

Clerk's Signature  
 A copy of this notice will be kept on file in the Clerk's Office.

mortgage holder for damaging the property during the redemption period.

Attention Purchaser: This sale may be rescinded by the foreclosing mortgagee for any reason. In that event, your damages, if any, shall be limited solely to the return of the bid amount tendered at sale, plus interest, and the purchaser shall have no further recourse against the Mortgagor, the Mortgagee, or the Mortgagee's attorney. Attention homeowner: If you are a military service member on active duty, if your period of active duty has concluded less than 90 days ago, or if you have ordered to active duty, please contact the attorney for the party foreclosing the mortgage at the telephone number stated in this notice.

This notice is from a debt collector.  
 Date of notice: 9/23/2021

**NOTICE** the minutes of the meeting of the Berrien County Board of Commissioners held THURSDAY, SEPTEMBER 23, 2021 are available in the County Clerk's office at 701 Main Street, St. Joseph, MI 49085 from 9:30 am to 5:00 pm Monday through Friday or on the website at www.berriencounty.org Publish SEPTEMBER 30, 2021

if the property is sold at foreclosure sale under Chapter 32 of the Revised Judicature Act of 1961, pursuant to MCL 600.3278 the borrower will be held responsible to the person who buys the property at the mortgage foreclosure sale or to the mortgage holder for damaging the property during the redemption period.

Attention homeowner: If you are a military service member on active duty, if your period of active duty has concluded less than 90 days ago, or if you have been ordered to active duty, please contact the attorney for the party foreclosing the mortgage at the telephone number stated in this notice.

This notice is from a debt collector.  
 Date of notice: September 23, 2021  
 Trott Law, P.C.  
 31440 Northwestern Hwy, Suite 145 Farmington Hills, MI 48334  
 (248) 642-2515  
 1443753  
 (09-23)(10-14)

Meeting Agenda, Minutes, Public Comments



**WEESAW TOWNSHIP  
New Troy, MI  
REGULAR BOARD MEETING**



**2021-2026 PARKS & RECREATION PLAN  
PUBLIC HEARING**

**Wednesday, October 20, 2021  
AGENDA**

- **Call Meeting to Order** *7 p.m.*
- **Pledge of Allegiance to the Flag**
- **Roll call:** Wanda Green, Art King, Gary Sommers, Michelle Tackitt, Robert Warmbein
- **Minutes, Notes will be Recorded by Dr. Jack Dodds** – who has so graciously gathered, composed and recorded the contents of the new Parks and Recreation Plan for the Township. We owe a huge debt of gratitude to Jack for all his hard work and tenacity to this outstanding undertaking on the Township's behalf.
- **Temporarily Suspend Board Meeting/Open Public Hearing** Time: *7:02 p.m.*
- **Weesaw Township Parks & Recreation Plan, 2021-2026, Resolution #2021-10  
Review and Public Comments Heard**
- **Close Public Hearing/Reopen Board Meeting** Time: *7:33 p.m.*
- **Adopt Resolution #2021-10 – Weesaw Township Parks & Recreation Plan, 2021-2026**
- **Public Comments** – Other/Hearing of Persons Present (2 minutes time limit)
- **Adjournment** *8:24 p.m.*

**NEXT REGULAR BOARD MEETING:  
Wednesday, November 17, 2021**



**WEESAW TOWNSHIP**  
**New Troy, MI 49119**



**REGULAR BOARD MEETING**

**2021-2026 PARKS & RECREATION PLAN**  
**PUBLIC HEARING**

**MINUTES**

Wednesday, October 20, 2021

Meeting called to order by Supervisor Gary Sommers at 7:00 p.m. The Pledge of Allegiance to the Flag was recited by all present.

- Supervisor Sommers appointed Jack Dodds to act as secretary recording the minutes of the meeting and the hearing due to the emergency absence of Clerk Wanda Green.
- **Roll Call by Jack Dodds, substituting for Clerk Green:** Members Present–Art King, Gary Sommers, Robert Warmbein. Members Absent–Wanda Green, Michelle Tackitt
- **Board Meeting Temporarily Suspended/Public Hearing Opened :** Gary Sommers opened the Public Hearing to hear comments on the Weesaw Township Parks and Recreation Plan, 2021-2026, at 7:02 p.m.

Initial written comments were read by Jack Dodds: The parks plan being considered at this hearing is one step in the development of Weesaw Township Parks that began over ten years ago. Along the way, our planning has benefited from all the insights and efforts of several Weesaw Township boards and the members of the ongoing Weesaw Township Parks Committee.

Most of all, our Parks plan presented here has been shaped by the many comments and suggestions from township residents and park visitors. The four park surveys conducted over ten years received over 360 responses and 160 written comments. The Parks Committee sifted all of this information, weighed decisions about what residents most wanted for our parks, and produced the plan before us.

Tonight's hearing is one more opportunity for input that will shape the final version of the plan to be submitted to the Michigan Department of Natural Resources and to support future township requests for parks and recreation grants. And so, what more needs to be said about our parks and recreation plan?

Mike Metz, Weesaw Parks Committee Member: Mike briefly described what a parks plan is, what it does, and how it compares to the township's five-year Master Plan. He

emphasized that it points in a direction for improvements and provides support for grant applications.

### Public Comments

Glen Pastryk, 12521 Cleveland Avenue, Buchanan, Michigan: Mr. Pastryk asked what the over-all intentions were for the plan, what it aimed to accomplish. Jack Dodds responded by reading the goals for the parks listed in Part 5 of the Plan. Pastryk then asked about the impact of the Plan and park improvements on the new portion of the the New Troy Cemetery, which is adjacent to the woodland section of Weesaw Park. Supervisor Sommers responded by describing plans for a columbarium to be erected near the park's rustic trail that will eventually circle Weesaw Park. Pastryk asked about the timber cutting that was once proposed for the park and was told by Sommers that the proposal was no longer being considered and that the park woodland would remain as it is.

Jim Pastryk, 4250 Lynn Street, Sawyer, Michigan: Mr. Pastryk asked for further description of the rustic trail and responded favorably to the intention to preserve the woodland section of the park and to develop the trail. Park Committee member Hanover summarized the initial stages of plan implementation, even before a request for a grant is made. Trustee Robert Warmbein indicated that he supported the Parks Plan and thought it would be good for the township to pursue the Plan through the award of a grant. Gary Sommers responded by identifying the priorities for park development as stressed by township residents over multiple surveys. He also itemized costs, showing a total amount close to a spending objective \$150,000 (\$100,00 grant from DNR, \$50,000 matching township contribution).

Open-sided pavilion - \$45,000  
Multi-sport court - \$36,350  
4 benches - \$6,000  
Playground equipment - \$60,000  
Incidental costs - \$2,650

- **Resolution for Adoption of the Weesaw Township Parks & Recreation Plan, 2021-2026, Resolution # 2021-10:** Following public comments, Supervisor Sommers announced the resolution for adoption of the plan and asked Jack Dodds to read the resolution before the vote. Motion to adopt by Sommers; seconded by Robert Warmbein.

Discussion: Supervisor Sommers emphasized that while there is much in the plan to be pursued, the township has five years to achieve these goals.

Vote on Resolution 2021-10: Voice vote, all ayes, motion carried. By a quorum of members present, Resolution 2021-10, the Weesaw Township Parks and Recreation Plan, 2021-2026, is adopted.

- **Close Public Hearing/Reopen Township Board Meeting and Adjournment:** There being no further public comments, Supervisor Sommers called for the meeting to be adjourned. Robert Warmbein moved and Gary Sommers seconded the motion at 8:14 p.m. Voice vote, all ayes, motion carried.

Respectfully submitted,

  
Wanda Green, Clerk

  
Gary Sommers, Supervisor

# Resolution of Adoption

**Weesaw Township, Berrien County, Michigan**

**Resolution of Adoption, No 2021-10**

**Weesaw Township Parks & Recreation Plan, 2021-2026**

For *Weesaw Township, Berrien County, Michigan*

*WHEREAS, the Weesaw Township Board has authorized the Weesaw Township Parks Committee to undertake a planning process to determine the recreation and natural resource conservation needs and desires of its residents during a five-year period covering the years 2021 through 2026, and*

*WHEREAS, the Weesaw Township Board has authorized the Weesaw Township Parks Committee to begin the process of developing a community parks and recreation plan in accordance with the most recent guidelines developed by the Department of Natural Resources and made available to local communities, and*

*WHEREAS, residents of Weesaw Township were provided with a well-advertised opportunity during the development of the draft plan to express opinions, ask questions and discuss all aspects of the recreation and natural resource conservation plan, and*

*WHEREAS, the public was given a well-advertised opportunity and reasonable accommodations to review the draft plan for a period of at least thirty (30 days), and*

*WHEREAS, a public hearing was held on October 20, 2021, at Weesaw Township Hall, New Troy, Michigan 49119, to provide an opportunity for all residents of the planning area to express opinions, ask questions and discuss all aspects of the Weesaw Township Parks & Recreation Plan, 2021-2026, and*

*WHEREAS, the Weesaw Township Parks Committee has developed the plan as a guideline for improving recreation and enhancing natural resource conservation for Weesaw Township, and*

*WHEREAS, after the public hearing, the Weesaw Township Board voted to adopt the Weesaw Township Parks & Recreation Plan, 2021-2026,*

*NOW, THEREFORE BE IT RESOLVED the Weesaw Township Board hereby adopts the Weesaw Township Parks & Recreation Plan, 2021-2026, Resolution No. 2021-10.*

Yeas: Gary Sommers, Art King, Robert Warmbein

Nays: None Absent: Wanda Green, Michelle Tackitt

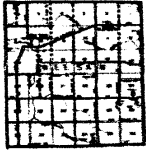
*Resolution declared adopted.*

*I, Wanda Green, Clerk of Weesaw Township, do hereby certify that the foregoing is a true and original copy of a resolution adopted by the Weesaw Township Board at a Regular Meeting thereof held on the 20th day of October, 2021.*

Attest: Wanda J. Green  
Wanda Green, Clerk

Witness: Gary Sommers  
Gary Sommers, Supervisor





## WEESAW TOWNSHIP

13518 State Street, New Troy, MI 49119  
(269) 426-3003 – Fax (269) 426-7114  
[www.weesawtownship.net](http://www.weesawtownship.net)



November 18, 2021

Marcy Hamilton  
Deputy Executive Director/Senior Planner  
Southwest Michigan Planning Commission (SWMPC)  
**376 W. Main Street, Suite 130**  
**Benton Harbor, Michigan 49022-3651**

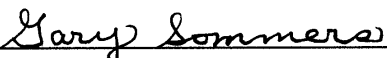
Dear Ms. Hamilton:

Enclosed is the final draft of the Weesaw Township Parks & Recreation Plan, 2021-2026. The plan was prepared and edited by the Weesaw Township Parks Committee, depending heavily on results from four separate surveys of township residents and other park visitors. In preliminary form, it was presented in printed and online formats to township residents for further comments and then submitted to the Township Board for formal approval following a final public hearing, October 20, 2021.

Following the addition of final certification documents, the plan will be submitted to the Michigan Department of Natural Resources for their review and approval. During the life of the plan, it will be subject to review and amendment by the Weesaw Township Board.

Please feel free to contact Weesaw Township or me personally if you have any comments regarding our plan.

Thank you for your consideration.

  
\_\_\_\_\_  
Gary Sommers  
Weesaw Township Supervisor  
Chair, Weesaw Township Parks Committee



**WEESAW TOWNSHIP**

**13518 State Street, New Troy, MI 49119**  
**(269) 426-3003 - Fax (269) 426-7114**  
**www.weesawtownship.net**



November 18, 2021

Katie Montoya, Assistant Director  
Berrien County Planning Commission  
Administration Center  
701 Main Street  
St. Joseph, MI 49805

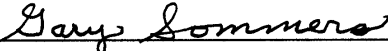
Dear Ms. Montoya:

Enclosed is the final draft of the Weesaw Township Parks & Recreation Plan, 2021-2026. The plan was prepared and edited by the Weesaw Township Parks Committee, depending heavily on results from four separate surveys of township residents and other park visitors. In preliminary form, it was presented in printed and online formats to township residents for further comments and then submitted to the Township Board for formal approval following a final public hearing, October 20, 2021.

Following the addition of final certification documents, the plan will be submitted to the Michigan Department of Natural Resources for their review and approval. During the life of the plan, it will be subject to review and amendment by the Weesaw Township Board.

Please feel free to contact Weesaw Township or me personally if you have any comments regarding our plan.

Thank you for your consideration.

  
\_\_\_\_\_  
Gary Sommers  
Weesaw Township Supervisor  
Chair, Weesaw Township Parks Committee



## COMMUNITY PARK, RECREATION, OPEN SPACE, AND GREENWAY PLAN CERTIFICATION CHECKLIST

*By Authority of Parts 19, 703 and 716 of Act 451, P.A. 1994, as amended, submission of this information is required for eligibility to apply for grants*

**INSTRUCTIONS:** Complete, obtain certification signatures and submit this checklist with a locally adopted recreation plan.

All recreation plans are required to meet the content and local approval standards listed in this checklist and as outlined in the *Guidelines for the Development of Community Park, Recreation, Open Space and Greenway Plans* provided by the Michigan Department of Natural Resources (DNR). Plans must be submitted to the DNR **with** a completed checklist that has been signed by an authorized official(s) of the local unit of government(s) submitting the plan. Plans may be submitted at any time of the year, but no later than March 1 of the year the local unit of government is applying for grants.

### PLAN INFORMATION

Name of Plan:

Weesaw Township Parks and Recreation Plan, 2021-2026

List the community names (including school districts) that are covered under the plan and have passed a resolution adopting the plan.	County	Month and year plan adopted by the community's governing body
Weesaw Township	Berrien	October 2021

### PLAN CONTENT

**INSTRUCTIONS:** Please check each box to certify that the listed information is included in the final plan.

**1. COMMUNITY DESCRIPTION**

**2. ADMINISTRATIVE STRUCTURE**

- Roles of Commission(s) or Advisory Board(s)
- Department, Authority and/or Staff Description and Organizational Chart
- Annual and Projected Budgets for Operations, Maintenance, Capital Improvements and Recreation Programming
- Current Funding Sources
- Role of Volunteers
- Relationship(s) with School Districts, Other Public Agencies or Private Organizations

**Regional Authorities or Trailway Commissions Only**

- Description of the Relationship between the Authority or Commission and the Recreation Departments of Participating Communities
- Articles of Incorporation

**3. RECREATION INVENTORY**

- Description of Methods Used to Conduct the Inventory
- Inventory of all Community Owned Parks and Recreation Facilities
- Location Maps (site development plans recommended but not required)
- Accessibility Assessment
- Status Report for all Grant-Assisted Parks and Recreation Facilities

**4. RESOURCE INVENTORY (OPTIONAL)**

**5. DESCRIPTION OF THE PLANNING PROCESS**

**6. DESCRIPTION OF THE PUBLIC INPUT PROCESS**

Description of the Method(s) Used to Solicit Public Input Before or During Preparation of the Plan, Including a Copy of the Survey or Meeting Agenda and a Summary of the Responses Received

Copy of the Notice of the Availability of the Draft Plan for Public Review and Comment

Date of the Notice August 19, 2021

Type of Notice Legal Notice in Newspaper

Plan Location Township Hall, on-line

Duration of Draft Plan Public Review Period (Must be at Least 30 Days) 35 days

Copy of the Notice for the Public Meeting Held after the One Month Public Review Period and Before the Plan's Adoption by the Governing Body(ies)

Date of Notice October 7, 2021

Name of Newspaper Berrien County Record

Date of Meeting October 20, 2016

Copy of the Minutes from the Public Meeting

**7. GOALS AND OBJECTIVES**

**8. ACTION PROGRAM**

**9. POST-COMPLETION SELF-CERTIFICATION REPORT(S)**

**PLAN ADOPTION DOCUMENTATION**

**APPROVAL DOCUMENTATION:** For multi-jurisdictional plans, **each** local unit of government must pass a resolution adopting the plan. Prepare and attach a separate page for each unit of government included in the plan.

1. Official resolution of adoption by the governing body dated: October 20, 2021

2. Official resolution of the Weesaw Township Board Commission or Board, recommending adoption of the plan by the governing body, dated: October 20, 2021

3. Copy of letter transmitting adopted plan to County Planning Agency dated: November 18, 2021

4. Copy of letter transmitting adopted plan to Regional Planning Agency dated: November 18, 2021

**OVERALL CERTIFICATION**

**NOTE:** For multi-jurisdictional plans, Overall Certification must include the signature of each local unit of government. Prepare and attach a separate signature page for each unit of government included in the plan.

I hereby certify that the recreation plan for

Weesaw Township includes the required content, as indicated  
(Local Unit of Government)

above and as set forth by the DNR.

Mary Summers 11.18.2021  
Authorized Official for the Local Unit of Government Date

**This completed checklist must be uploaded in MiRecGrants.**



PUBLIC OUTDOOR RECREATION GRANT
POST-COMPLETION SELF-CERTIFICATION REPORT

This information required under authority of Part 19, PA 451 of 1994, as amended;
the Land and Water Conservation Fund Act of 1965, 78 Stat. 897 (1964); and Part 715, of PA 451 of 1994, as amended.

GRANT TYPE: [X] MICHIGAN NATURAL RESOURCES TRUST FUND [ ] CLEAN MICHIGAN INITIATIVE
[ ] LAND AND WATER CONSERVATION FUND [ ] RECREATION PASSPORT [ ] BOND FUND

GRANTEE: Weesaw Township, Berrien County

PROJECT NUMBER: Grant #TF07-082

PROJECT TYPE: Park purchase

PROJECT TITLE: Weesaw Township Park

PROJECT SCOPE: Complete purchase of park lands from the Friends of New Troy

TO BE COMPLETED BY LOCAL GOVERNMENT AGENCY (GRANTEE)

Table with 3 columns: Name of Agency (Grantee), Contact Person, Title, Address, Telephone, City, State, ZIP, Email. Row 1: Weesaw Township, Gary Sommers, Supervisor, 13518 State Street PO Box 38, 269-426-3002, New Troy, MI 49119, weesawtownship@comcast.net

SITE DEVELOPMENT

Any change(s) in the facility type, site layout, or recreation activities provided? If yes, please describe change(s). [ ] Yes [X] No

Has any portion of the project site been converted to a use other than outdoor recreation? If yes, please describe what portion and describe use. (This would include cell towers and any non-recreation buildings.) [ ] Yes [X] No

Are any of the facilities obsolete? If yes, please explain. [X] Yes [ ] No
Playground equipment dates from the 1970s to 1990s

SITE QUALITY

Is there a park entry sign which identifies the property or facility as a public recreation area? If yes, please provide a photograph of the sign. If no, please explain. [X] Yes [ ] No

Are the facilities and the site being properly maintained? If no, please explain. [X] Yes [ ] No

Is vandalism a problem at this site? If yes, explain the measures being taken to prevent or minimize vandalism. [ ] Yes [X] No
Security cameras operate at the site

**POST COMPLETION SELF-CERTIFICATION REPORT - CONT'D**

Is maintenance scheduled on a regular basis? If yes, give schedule. If no, please explain. Yes No  
Weekly, monthly, and as necessary

**GENERAL**

Is a Program Recognition plaque permanently displayed at the site? If yes, please provide a photograph. (Not required for Bond Fund Grants) Yes No N/A

Is any segment of the general public restricted from using the site or facilities? (i.e. resident only, league only, boaters only, etc.) If yes, please explain. Yes No

Is a fee charged for use of the site or facilities? If yes, please provide fee structure. Yes No

What are the hours and seasons for availability of the site?  
Site is available dawn to dusk throughout the year.

**COMMENTS (ATTACH SEPARATE SHEET IF MORE SPACE IS NEEDED)**

POST COMPLETION SELF-CERTIFICATION REPORT - CONT'D

**CERTIFICATION**

*I do hereby certify that I am duly elected, appointed and/or authorized by the Grantee named above and that the information and answers provided herein are true and accurate to the best of my personal knowledge, information and belief.*

Gary Sommers

Please print

*Gary Sommers*  
Grantee Authorized Signature

Nov. 18, 2021

Date

Wanda J. Green

Please print

*Wanda J. Green*  
Witness Signature

Nov. 18, 2021

Date

Send completed report to:

POST COMPLETION GRANT INSPECTION REPORTS  
GRANTS MANAGEMENT  
MICHIGAN DEPARTMENT OF NATURAL RESOURCES  
PO BOX 30425  
LANSING MI 48909-7925

